

# COMMERCIAL AUDIO

CATALOGUE 2024

**PROEL** 



# INDEX

EN54 Evacuation systems	<b>4</b>
Speakers for EN54 evac applications	<b>11</b>
Intercom	<b>18</b>
Audio systems	<b>21</b>
Conference systems	<b>23</b>
Portable systems	<b>27</b>
Amplifiers	<b>29</b>
Pre-amplifiers/Mixers and processors	<b>33</b>
Receivers and audio sources	<b>36</b>
Sound speakers	<b>39</b>
Professional acoustic speakers	<b>50</b>
LNE Systems	<b>61</b>
Microphones	<b>63</b>
Rack and accessories	<b>68</b>
Volume controls	<b>75</b>
Line transformers	<b>77</b>
Cables and connectors	<b>79</b>



The background of the image is a vertical wooden plank wall. In the top right corner, a portion of a red fire alarm bell is visible. At the bottom of the image, there are bright, glowing flames in shades of yellow and orange. A green rectangular box is positioned on the right side of the wall, containing the text 'FIRE EX' in white, bold, sans-serif font. Below the text is a white horizontal line.

**FIRE EX**





# EN54 EVACUATION SYSTEMS



# EN54 EVACUATION SYSTEMS



## AE604

Wall mounted All-In-One voice alarm system compliant with **EN54-16** with testing and charge circuit compliant with **EN54-4**.

4 Zones System on redundant loudspeaker line and back up Amplifier.

Main and backup amplifier in class D "Pure Path"™.

300W @ 100V on redundant loudspeaker line (A + B). The system does not require a line end resistor.

The system ensures full power performance even with backup power. Processing circuit by DSP; balanced and isolated background music input, isolated and balanced background music microphone input with selectable 48Vdc phantom power supply and priority activation by contact; monitored input for remote emergency call stations; front panel fitted with monitor loudspeaker, monitored emergency PPT microphone, direct sending message keys, navigation keys, large display with LCD dot matrix.

Line output for active sub-woofer; audio messages stored on uSD 16bit 48kHz; 8 general purpose messages with activation from dedicated input contacts or incorporated scheduler, 8 monitored contacts for emergency announcement activation. 4 12Vdc batteries 18Ah not included.

Main Unit Dimensions (WxHxD): 470x550x235mm

Battery Case Dimensions (WxHxD): 470x220mmx200mm

Certification EN 54-16:2008 0051-CPR-1901



## AE300 (order code AE300R1)

Wall mounted All-In-One voice alarm system compliant with **EN54-16** with testing and charge circuit compliant with **EN54-4**.

Main and backup amplifier in class D "Pure Path"™.

300W @ 100V on redundant loudspeaker line (A + B). The system does not require a line end resistor.

The system ensures full power performance even with backup power. Processing circuit by DSP; balanced and isolated background music input, isolated microphone input with selectable 48Vdc phantom power supply and priority activation by contact; monitored input for remote emergency call stations; front panel fitted with monitor loudspeaker, monitored emergency PPT microphone, direct sending message keys, navigation keys, large display with LCD dot matrix.

Line output for active sub-woofer; audio messages stored on uSD 16 bit 48kHz; 8 general purpose messages with activation from dedicated input contacts or incorporated scheduler, 2 monitored contacts for emergency announcement activation.

4 12Vdc batteries. 7.2Ah not included

Dimensions (WxHxD): 440x495x155mm

Certification EN 54-16:2008 0051-CPR-0514



## PA DBE01

Fully monitored desk call station according to **EN54-16**. Software programmable “Talk” key, “Busy” and “System” LEDs, dynamic gooseneck microphone, automatic compressor, level adjustment trimmer Wiring by Rj45 connector and CAT5 Cable.



## PA DBE06

Fully monitored desk call station according to **EN54-16**. Software programmable capacitive selection keys, “Talk” and “Busy” Keys, “System” LEDs, dynamic gooseneck microphone, automatic compressor, level adjustment trimmer Wiring by Rj45 connector and CAT5 Cable. Wiring by Rj45 connector and CAT5 Cable. Power supply from RJ45 cable or 24Vdc local adaptor.



## PA DBE108

Fully monitored desk call station according to **EN54-16**. 10 keys dial keyboard, “Talk” and “Clear” key, 3 Evac activation keys, touch screen quarter VGA TFT display, dynamic gooseneck microphone, DSP audio processing. All keys and functions are software programmable. Wiring by Rj45 connector and CAT5 Cable. Power supply from RJ45 cable or 24Vdc local adaptor.



## PA DBE108E

Fully monitored Ethernet desk call station according to **EN54-16**. Connects to networkable Proel Evac System. 10 keys dial keyboard, “Talk” and “Clear” key, 3 Evac activation keys, touch screen quarter VGA TFT display, dynamic gooseneck microphone, DSP audio processing. All keys and functions are software programmable. Wiring by Rj45 connector and CAT5 Cable. Power supply from RJ45 cable or 24Vdc local adaptor.



## PA DBEVF

Fully monitored, wall-mount, red metal box, **EN54-16** Firemen’s call station with handheld PTT Microphone. Fully software programmable, with status LEDs. Access to the security and fire alarm features system is granted by a key-lock. “EVAC” and “ALARM” Remote Message Activation Button. Wiring by Rj45 connector and CAT5 Cable. Power supply from RJ45 cable or 24Vdc local adaptor.



# EN54 EVACUATION SYSTEMS



## PA EV PROM5Z

- Digital Master matrix certified **EN 54-16**
- Up to 5 slots for direct plug-in modules for the Amplifier/line control .
- Up to 108 zones (54 with dual-line architecture for zone A/B)
- LCD display with navigation knobs for the complete unit control Led Power, Fault Warning e Voice Alarm
- Front USB socket for PC interface purposes
- 24 Vdc power supply input
- Spare amplifier input
- Two RJ45 connectors for the Slave matrix connecting purposes
- Two RJ45 connectors for the microphone units connecting (up to 108 microphone units )
- Two contact activation messages and in/out programmable connectors
- Common fault out
- 2 rack unit 19" Standard
- Certification EN54-16:2008 0068-CPR-014



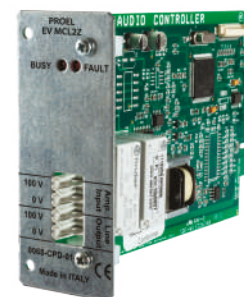
## PA EV PROS8Z

- EN54-16** certified slave matrix
- Up to 8 directly insertable modules for amplifier/line control
- Power LED
- Fault Warning and Voice Alarm
- 24Vdc power supply input
- Backup amplifier input
- Four RJ45 connectors for connection to the Master matrix and subsequent Slave matrix
- 2 standard 19" rack units
- Certification EN54-16:2008 0068-CPR-014



## PA EV MCL1Z

Zone module for amplifier/line control to be inserted in the Master EV PROM5Z or Slave EV PROS8Z matrix.



## PA EV MCL2Z

Zone module for the control of the second line in the same zone amplifier, to be inserted in the Master EV PROM5Z or Slave EV PROS8Z matrix.

## PA DM250

Modular Professional Power Unit: 70/100V – 250W  
Speaker short-circuit and overload protection circuit  
Multi-Level Protection and Self Fault Recovery  
Energy Saving Circuit  
On Board DSP  
LED indicators  
Master Level control  
Low and high tone adjustment  
PA-HF Filter with rear switch  
VOX threshold adjustment  
MIC/Line input gain adjustment  
Balanced Line Input on Euroblock terminal  
Priority Mic/Line Balanced Input on RJ45 socket  
Two selectable outputs at Constant voltage (70/100V) on Euroblock terminal  
48Vdc emergency power supply  
Dimensions (WxHxD): 116x53x367mm  
Weight: 2.15Kg  
Maximum 8 modules in a rack case MDA8C (3U rack 19")

## PA DM550

Modular Professional Power Unit: 70/100V – 550W  
Speaker short-circuit and overload protection circuit  
Multi-Level Protection and Self Fault Recovery  
Energy Saving Circuit  
On Board DSP  
LED indicators  
Master Level control  
Low and high tone adjustment  
PA-HF Filter with rear switch  
VOX threshold adjustment  
MIC/Line input gain adjustment  
Balanced Line Input on Euroblock terminal  
Priority Mic/Line Balanced Input on RJ45 socket  
Two selectable outputs at Constant voltage (70/100V) on Euroblock terminal  
48Vdc emergency power supply  
Dimensions (WxHxD): 116x53x367mm  
Weight: 2.15Kg  
Maximum 8 modules in a rack case MDA8C (3U rack 19")

## PA DM750

Modular Professional Power Unit: 70/100V – 750W  
Speaker short-circuit and overload protection circuit  
Multi-Level Protection and Self Fault Recovery  
Energy Saving Circuit  
On Board DSP  
LED indicators  
Master Level control  
Low and high tone adjustment  
PA-HF Filter with rear switch  
VOX threshold adjustment  
MIC/Line input gain adjustment  
Balanced Line Input on Euroblock terminal  
Priority Mic/Line Balanced Input on RJ45 socket  
Two selectable outputs at Constant voltage (70/100V) on Euroblock terminal  
48Vdc emergency power supply  
Dimensions (WxHxD): 116x53x367mm  
Weight: 2.15Kg  
Maximum 8 modules in a rack case MDA8C (3U rack 19")

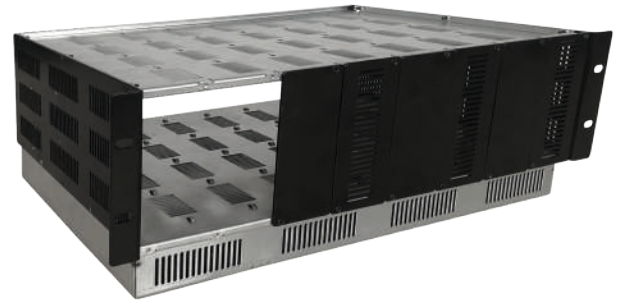


# EN54 EVACUATION SYSTEMS



## PA MDAC8V2

8 units rack case (3U rack 19") for MDA series.



## PA MDACTV

8 units rack ventilated case (3U rack 19") for MDA/DMPower series.



## PA 48VDCER1



Back-up power supply control system.

Provides the back-up power supply to maintain the system in operation when there is no mains power supply. 48V input for external back-up batteries (not provided). Battery capacity 270 Ah- (Max total output 200A). The built-in charger controls the power supply circuit when the AC supply operates correctly. In case of no mains power supply, all system devices will be automatically powered by the 48VDC batteries. The system controls the power supply circuit both for the mains power supply and for battery operation by communicating the power supply status and any faults to the unit.

**EN54-4** certified system 230V/50Hz power supply.





# **SPEAKERS FOR EN54 EVAC APPLICATIONS**



# SPEAKERS FOR EN54 EVAC APPLICATIONS

## ARTIA SERIES



### PA A51TB - PA A51TW

System type: Wall Mount Speaker  
Drivers: 1" tweeter, 5" woofer  
Power Rating @ 8 $\Omega$  (nominal): 50 W  
Rated Noise Power 100h: 50 W  
Power Rating @ 100V: 50 / 25 / 12.5 / 6.25 W  
Power Rating @ 70V: 50 / 25 / 12.5 / 6.25 / 3.12 W  
Impedance: 8  $\Omega$  (nominal)  
200 / 400 / 800 / 1.6K  $\Omega$  @ 100V  
100 / 200 / 400 / 800 / 1.6K  $\Omega$  @ 70V  
Connector: Ceramic Terminal Block  
Power Selection: Rotary Switch  
Frequency Response: (-10 dB) 90 - 20k Hz  
Sensitivity at 1W (1 kHz, 1m / 4m): 89 / 77 dB  
Max SPL (1 kHz, 1m / 4m): 106 / 94 dB  
Coverage Angle at 500 / 1k / 2k / 4k Hz(-6dB): 180° / 180° / 180° / 120°  
Cabinet: Black (RAL 9011)/White (RAL 9016)  
Material: ABS / Aluminium  
Environmental Type: B (IP55C)  
Operating Temperature: -25 ÷ +70 °C (-13 ÷ +158 °F)  
Relative Humidity: < 95%  
Dimensions (mm): 170 x 245 x 175 (W x H x D)  
Mounting: on wall using supplied bracket  
Weight (Kg): 2.3  
Standard Compliance: **EN54-24:2008**  
PA A51TB: Black Color  
PA A51TW: White Color



### PA A31TB - PA A31TW

System type: Wall Mount Speaker  
Drivers: 1" tweeter, 3" woofer  
Power Rating @ 8 $\Omega$  (nominal): 25W  
Rated Noise Power 100h: 25 W  
Power Rating @ 100V: 25 / 12.5 / 6.25 / 3.12 W  
Power Rating @ 70V: 25 / 12.5 / 6.25 / 3.12 / 1.56 W  
Impedance: 8  $\Omega$  (nominal)  
400 / 800 / 1.6K / 3.2K  $\Omega$  @ 100V  
200 / 400 / 800 / 1.6K / 3.2K  $\Omega$  @ 70V  
Connector: Ceramic Terminal Block  
Power Selection: Rotary Switch  
Frequency Response: (-10 dB) 120 - 20k Hz  
Sensitivity at 1W (1 kHz, 1m / 4m): 87 / 75 dB  
Max SPL (1 kHz, 1m / 4m): 101 / 89 dB  
Coverage Angle at 500 / 1k / 2k / 4k Hz(-6dB): 180° / 120° / 120° / 90°  
Cabinet: Black (RAL 9011)/White (RAL 9016)  
Material: ABS / Aluminium  
Environmental Type: B (IP55C)  
Operating Temperature: -25 ÷ +70 °C (-13 ÷ +158 °F)  
Relative Humidity: < 95%  
Dimensions (mm): 140 x 209 x 125 (W x H x D)  
Mounting : on wall using supplied bracket  
Weight (Kg): 1.74  
Standard Compliance: **EN54-24:2008**  
PA A31TB: Black Color  
PA A31TW: White Color

# ARTIA SERIES



## PA AP50T

System type: Sound Projector  
Drivers: 5" dual cone full range  
Rated Noise Power 100h: 20 W  
Power Rating @ 100V: 20 / 10 / 5 W  
Power Rating @ 70V : 10 / 5 / 2.5 W  
Impedance: 500 / 1K / 2K  $\Omega$  @ 100V  
500 / 1K / 2K  $\Omega$  @ 70V  
Connector: Ceramic Terminal Block  
Power Selection: On terminal block  
Frequency Response: (-10 dB) 100 - 12k Hz  
Sensitivity at 1W (1 kHz, 1m / 4m): 90 / 78 dB  
Max SPL (1 kHz, 1m / 4m): 103 / 91 dB  
Coverage Angle at 500 / 1k / 2k / 4k Hz(-6dB): 180° / 120° / 80° / 60°  
Cabinet: White (RAL 9016)  
Material: Aluminium  
Environmental Type: B (IP55C)  
Operating Temperature: -25 ÷ +70 °C (-13 ÷ +158 °F)  
Relative Humidity: < 95%  
Dimensions (mm): 140 x 140 x 195 (W x H x D)  
Mounting : Brick/concrete on ceilings/wall  
Weight (Kg): 2.63  
Standard Compliance: **EN54-24:2008**



## PA AP52T

System type: Bi-Directional Sound Projector  
Drivers: 2x 5" full range  
Rated Noise Power 100h: 20 W  
Power Rating @ 100V: 20 / 10 / 5 W  
Power Rating @ 70V : 10 / 5 / 2.5 W  
Impedance: 500 / 1K / 2K  $\Omega$  @ 100V  
500 / 1K / 2K  $\Omega$  @ 70V  
Connector: Ceramic Terminal Block  
Power Selection: On terminal block  
Frequency Response: (-10 dB) 120 - 12k Hz  
Sensitivity at 1W (1 kHz, 1m / 4m): 88 / 76 dB  
Max SPL (1 kHz, 1m / 4m): 101 / 89 dB  
Coverage Angle at 500 / 1k / 2k / 4k Hz(-6dB): (2x) 180° / 120° / 80° / 60°  
Cabinet: White (RAL 9016)  
Material: Aluminium  
Environmental Type: B (IP55C)  
Operating Temperature: -25 ÷ +70 °C (-13 ÷ +158 °F)  
Relative Humidity: < 95%  
Dimensions (mm): 140 x 185 x 200 (W x H x D)  
Mounting : Brick/concrete on ceilings/wall  
Weight (kg): 3.45  
Standard Compliance: **EN54-24:2008**



# SPEAKERS FOR EN54 EVAC APPLICATIONS

## ARTIA SERIES



### PA AH50T

System type: Hanging Speaker  
Drivers: 5" dual cone full range  
Rated Noise Power 100h: 20 W  
Power Rating @ 100V: 20 / 10 / 5 W  
Power Rating @ 70V: 10 / 5 / 2.5 W  
Impedance: 500 / 1K / 2KΩ @ 100V  
500 / 1K / 2KΩ @ 70V  
Connector: Ceramic Terminal Block  
Power Selection: On terminal block  
Frequency Response: (-10 dB) 100 - 12k Hz  
Sensitivity at 1W (1 kHz, 1m / 4m): 90 / 78 dB  
Max SPL (1 kHz, 1m / 4m): 103 / 91 dB  
Coverage Angle at 500 / 1k / 2k / 4k Hz(-6dB): 180° / 120° / 80° / 60°  
Cabinet: White (RAL 9016)  
Material: Aluminium  
Environmental Type: B (IP55C)  
Operating Temperature: -25 ÷ +70 °C (-13 ÷ +158 °F)  
Relative Humidity: < 95%  
Dimensions (mm): 140 x 140 x 195 (W x H x D)  
Mounting: Suspended from ceilings  
Weight (kg): 2.77  
Standard Compliance: **EN54-24:2008**



### PA AIW50T

System type: In-Wall Speaker  
Drivers: 1" tweeter - 5" woofer  
Rated Noise Power 100h: 12 W  
Power Rating @ 100V: 12 / 6 / 3 W  
Power Rating @ 70V: 6 / 3 / 1.5 W  
Impedance: 850 / 1.7K / 3.4KΩ @ 100V  
850 / 1.7K / 3.4KΩ @ 70V  
Connector: Ceramic Terminal Block  
Power Selection: On terminal block  
Frequency Response: (-10 dB) 120 - 20k Hz (on wall)  
Sensitivity at 1W (1 kHz, 1m / 4m): 89 / 77 dB  
Max SPL (1 kHz, 1m / 4m): 100 / 88 dB  
Coverage Angle at 500 / 1k / 2k / 4k Hz(-6dB): 130° / 130° / 120° / 90°  
Cabinet: White (RAL 9016)  
Material: ABS / Aluminium  
Environmental Type: A (IP21C)  
Operating Temperature: -10 ÷ +55 °C (+14 ÷ +131 °F)  
Relative Humidity: < 95%  
Dimensions (mm): 280 x 192 x 77 (W x H x D)  
Mounting: In-wall or on surface with AIW50FRAME  
Weight (kg): 1.62  
Standard Compliance: **EN54-24:2008**



### PA AIW50FRAME

This optional accessory allows to install the AIW50T on the surface of concrete or brick walls.

# ARTIA SERIES



## PA AC61T

---

System type: Ceiling Speaker  
Drivers: 1" tweeter - 6" woofer  
Rated Noise Power 100h: 12 W  
Power Rating @ 100V: 12 / 6 / 3 W  
Power Rating @ 70V: 6 / 3 / 1.5 W  
Impedance: 850 / 1.7K / 3.4K  $\Omega$  @ 100V  
850 / 1.7K / 3.4K  $\Omega$  @ 70V  
Connector: Ceramic Terminal Block  
Power Selection: On terminal block  
Frequency Response: (-10 dB) 200 - 20k Hz (on wall)  
Sensitivity at 1W (1 kHz, 1m / 4m): 95 / 83 dB  
Max SPL (1 kHz, 1m / 4m): 105 / 93 dB  
Coverage Angle at 500 / 1k / 2k / 4k Hz(-6dB): 120° / 120° / 90° / 60°  
Cabinet: White (RAL 9016)  
Material: ABS / Aluminium  
Environmental Type: A (IP42C)  
Operating Temperature: -10 ÷ +55 °C (+14 ÷ +131 °F)  
Relative Humidity: < 95%  
Dimensions (mm): 186 x 114 (ø x D)  
Mounting : ø 166mm cut out  
Weight (kg): 1.07  
Standard Compliance: **EN54-24:2008**



## PA AC60T

---

System type: Ceiling Speaker  
Drivers: 6" dual cone full range  
Rated Noise Power 100h: 12 W  
Power Rating @ 100V: 12 / 6 / 3 W  
Power Rating @ 70V: 6 / 3 / 1.5 W  
Impedance: 850 / 1.7K / 3.4K  $\Omega$  @ 100V  
850 / 1.7K / 3.4K  $\Omega$  @ 70V  
Connector: Ceramic Terminal Block  
Power Selection: On terminal block  
Frequency Response: (-10 dB) 120 - 20k Hz (on wall)  
Sensitivity at 1W (1 kHz, 1m / 4m): 94 / 82 dB  
Max SPL (1 kHz, 1m / 4m): 104 / 92 dB  
Coverage Angle at 500 / 1k / 2k / 4k Hz(-6dB): 120° / 120° / 90° / 45°  
Cabinet: White (RAL 9016)  
Material: ABS / Aluminium  
Environmental Type: A (IP21C)  
Operating Temperature: -10 ÷ +55 °C (+14 ÷ +131 °F)  
Relative Humidity: < 95%  
Dimensions (mm): 186 x 74 (ø x D)  
Mounting : ø 166mm cut out  
Weight (kg): 0.81  
Standard Compliance: **EN54-24:2008**

# SPEAKERS FOR EN54 EVAC APPLICATIONS

## ARTIA SERIES



### PA ACO12T

System Type: Column Speaker  
Drivers: 1" tweeter - 12x2" woofer  
Rated Noise Power 100h: 40 W  
Power rating @ 100V: 40 / 20 / 10 W  
Power rating @ 70V: 20 / 10 / 5 W  
Impedance: 250 / 500 / 1K  $\Omega$  @ 100V  
250 / 500 / 1K  $\Omega$  @ 70V  
Connector: Ceramic Terminal block  
Power selection: On Terminal Block  
Frequency Response (-10 dB): 180 - 18k Hz  
Sensitivity at 1W (Pink, 1m / 4m): 87 / 75 dB  
Max SPL (Pink, 1m / 4m): 103 / 91 dB  
Coverage Angle at 500 / 1k / 2k / 4k Hz (-6dB):  
H 180° / 180° / 180° / 120°  
V 120° / 60° / 30° / 30°  
Cabinet: White (RAL 9016)  
Material: Aluminium  
Environmental Type: A (IP44C)  
Operating Temperature: -10 ÷ +55 °C (+14 ÷ +131 °F)  
Relative humidity: <95%  
Dimensions (mm): 78 x 828 x 66 (W x H x D)  
Mounting: on wall using supplied bracket  
Weight: 3.5 kg (7.71 lb)  
Standard Compliance: **EN54-24:2008**



### PA WS50EN

System Type: Wall / Ceiling Speaker  
Drivers: 5" woofer  
Rated Noise Power 100h: 6 W  
Power rating @ 100V: 6 / 3 / 1.5 / 0.75 W  
Power rating @ 70V: 6 / 3 / 1.5 / 0.75 / 0.375 W  
Impedance: 1.7K / 3.4K / 6.7K / 13K  $\Omega$  @ 100V  
850 / 1.7K / 3.4K / 6.7K / 13K  $\Omega$  @ 70V  
Connector: Ceramic Terminal Block  
Power selection: On Transformer Terminal  
Measure Environment: Free field on standard baffle  
Frequency Response (-10 dB): 170 - 10k Hz  
Sensitivity at 1W (1 kHz, 1m / 4m): 93 / 81 dB  
Sensitivity at 1W (Pink Noise 6dB Crest Factor, 1m / 4m): 90 / 78 dB  
Max SPL (Pink Noise 6dB Crest Factor, 1m / 4m): 97 / 85 dB  
Coverage Angle at 500 / 1k / 2k / 4k Hz (-6dB):  
Hor.: 130° / 120° / 100° / 70°  
Vert.: 130° / 120° / 100° / 70°  
Cabinet: White (RAL 9016)  
Material: ABS / Aluminium  
Environmental Type: A  
Protection Degree: IP21C  
Operating Temperature: -10 ÷ +40 °C (+14 ÷ +104 °F)  
Relative humidity: < 95%  
Dimensions (mm): 265 x 165 x 77 (W x H x D)  
Mounting: Wall / Ceiling  
Weight: 0.96 kg (2.12 lb)  
Standard Compliance: **EN54-24:2008**

# ARTIA SERIES



## PA AHS30T

System Type: Horn Speaker  
Drivers: 1.4" compression driver  
Power Rating @ 8Ω (nominal): 30 W  
Rated Noise Power 100h: 30 W  
Power rating @ 100V: 30 / 15 / 7.5 / 3.75 W  
Power rating @ 70V: 30 / 15 / 7.5 / 3.75 / 1.9 W  
Impedance: 8 Ω  
333 / 666 / 1.33k / 2.67k Ω @ 100V  
163 / 333 / 666 / 1.33k / 2.67k Ω @ 70V  
Connector: Ceramic Terminal block  
Power selection: Rotary Switch  
Frequency Response (-10 dB): 290 - 11k Hz  
Sensitivity at 1W (Pink, 1m / 4m): 104 / 92 dB  
Max SPL (Pink, 1m / 4m): 119 / 107 dB  
Coverage Angle at 500 / 1k / 2k / 4k Hz (-6dB): 180° / 100° / 80° / 45°  
Cabinet: White (RAL 9016)  
Material: ABS  
Environmental Type: B (IP55C)  
Operating Temperature: -25 ÷ +70 °C (-13 ÷ +158 °F)  
Relative humidity: <95%  
Dimensions (mm): 285 x 280 x 205 (W x H x D)  
Mounting: on wall using supplied bracket  
Weight: 1.9 kg (4.18 lb)  
Certification: **EN54-24:2008**



## PA CS-6HT60BS

System Type: Horn Speaker  
LF Speaker: 6.5" Waterproof PP Woofer  
HF Speaker 1" Compression Driver  
Rated Noise Power 100h @ 100V: 60 W  
Rated Noise Power 100h @ 70V: 30 W  
Power rating @ 100V: 60 / 30 / 15 / 7.5 W  
Power rating @ 70V: 30 / 15 / 7.5 / 3.75 W  
Impedance: 167 / 333 / 666 / 1.33k Ω  
Connector: Ceramic Terminal block  
Power selection: On Transformer Terminals  
Measure Environment: Free Field  
Frequency Response (-10 dB): 200 - 20k Hz  
Sensitivity at 1W (1 kHz, 1m / 4m): 102 / 100 dB  
Sensitivity at 1W (Pink Noise 6dB Crest Factor, 1m / 4m): 99 / 87 dB  
Max SPL (Pink Noise 6dB Crest Factor, 1m / 4m): 114 / 102 dB  
Horizontal Coverage Angle at 500 / 1k / 2k / 4k Hz (-6dB): 105° / 50° / 80° / 80°  
Vertical Coverage Angle at 500 / 1k / 2k / 4k Hz (-6dB): 140° / 70° / 90° / 150°  
Cabinet: White (RAL 9016)  
Material: ABS  
Environmental Type: B  
Protection Degree: IP66  
Operating Temperature: -25 ÷ +55 °C (-13 ÷ +131 °F)  
Relative humidity: <95%  
Dimensions (mm): 418 x 332 x 391 (W x H x D)  
Mounting: on wall using supplied bracket  
Weight :7.4 kg (16.3 lb)  
Standard Compliance: **EN54-24:2008**







**INTERCOMS**



## PA INCOM2

---

Intercom System for glass counter

Inputs: 2 x MIC

Output: 1x LINE, 1x REC, 1x SPEAKER

Speakers: 2 x 1.5" 4 ohm 3W

Controls: 1 external speakers level – 1 internal speakers level

1 external mic gain – 1 internal mic gain

Frequency Response 300Hz – 10kHz (-3dB)

Power Supply: 12 Vdc 500 mA by Adapter Power Supply 100-240

V~ 50/60 Hz (supplied)

Dimensions (W x H x D): Main base: 110 x 41 x 135 mm

Mic Gooseneck: Ø 13 x 365 mm External unit: Ø 171 x 18 mm

Construction: ABS - Aluminium

Weight: 0.7 Kg (complete system)

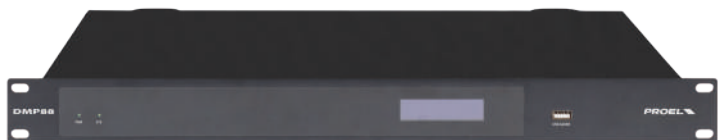




# AUDIO SYSTEMS



# AUDIO SYSTEMS



## PA DMP88

8IN 8OUT DIGITAL MATRIX PROCESSOR  
N° 8 MIC / LINE inputs balanced on Euroblock terminals  
N° 8 balanced LINE level zone outputs on Euroblock terminals  
N° 8 GPIO customizable I/O ports  
Ethernet, RS485, RS232 ports for remote control  
USB port for Audio I/O and Media Player operation  
Remote Video Cameras control with VISCA, PELCO or custom protocols  
Windows-based DMP control software to configure and control all DMP88's parameters  
16 built-in presets, each with the possibility to flexibly customize the type of modules and their sequences in accordance with the designer's requirements  
Standard 19" rack size (1 unit)



## PA WP88

Wall Control Panel for DMP88.



## PA RM88

Paging microphone base designed to be combined with the DMP88 to create a zone system with call on a single zone, a group of zones or all zones.





# CONFERENCE SYSTEMS



# CONFERENCE SYSTEMS



## WCS1000RXV2

The WCS1000 Wireless Conference System provides advanced technology, ease of use and flexibility in a full modular setup.

- PLL UHF Receiver
- Three operating modes: FIFO, LIMIT MODE, CHAIRMAN ONLY
- Capability to connect up to 256 microphone bases
- LCD display
- Individual level control for each channel
- Connection interface for external video processor
- Balanced outputs
- 19" rack-mount metal case



## WCS1000CV2

President microphone station for WCS1000 series wireless conference system

- PLL UHF Transmitter
- Uni-directional condenser microphone
- 3 function Key to set the microphone state
- Microphone On/Off Key
- 3 x 1.5V battery power supply
- Up to 50mt RF range



## WCS1000DV2

Delegate microphone station for WCS1000 series wireless conference system

- PLL UHF Transmitter
- Uni-directional condenser microphone
- 2 function Key to set the microphone state
- Microphone On/Off Key
- 3 x 1.5V battery power supply
- Up to 50mt RF range



## WCS1000CHV2

EIKON WCS1000CHV2 is a portable charging station for 8 battery packs of the WCS wireless transmitter series. It is supplied in a durable aluminum case with wheels and carrying handle.

- Able to charge up to 8 pcs rechargeable lithium batteries
- Universal Power Requirement AC 110 ~230V
- Electronic circuit for intelligent charging
- Retractable handle and wheels for transport





## PA DWSKIT

Wireless Discussion system composed of DWS receiving unit with four BMW wireless bases and battery charger.

Dual Display

Navigation keys

Level control of each individual microphone base

Infrared technology for setting the operating frequency

Mixed balanced and unbalanced output

Individual outputs for each channel

Channelled frequency mode or Tuning

Separate Squelch control for each individual Band

Wireless console with display and light ring to indicate the operational condition

Capacity: 50/60m

Metal case with 1 standard 19" rack unit

Two frequency ranges available: a: 610÷670 MHz



## PA CONFD

Conference and discussion system made in digital technology in compliance with IEC914 and ISO Standards.

Power supply and direct control of 64 microphone units

President base with priority

Three modes of operation of interventions: FREE MODE, LIMIT MODE and FIFO MODE

One MICRO and one LINE Input for external units

TAPE outputs for recording and LINE for room amplification (balanced and unbalanced)

Possibility of inserting an audio processor in the chain

Microphone SPL (1W/m) level control

Unit monitor loudspeaker level control

MALE-FEMALE 13m 8-Pin extension cable supplied



## PA BMCD

President microphone unit with "SPEAK" key, "PRIORITY" key and LED light of electret condenser microphone activated functions mounted on flexible stem with light ring, built-in monitoring loudspeaker with volume control, headphone jack. 2m Long Y-connector cable provided.

Base Dimensions (WxHxD): 235x54x110mm

Gooseneck length: 390mm

Weight: 1.15 kg



## PA BMDD

Delegate microphone unit with "SPEAK" key and LED light of electret condenser microphone activated functions mounted on flexible stem with light ring, built-in monitoring loudspeaker with volume control, headphone jack. 2m Long Y-connector cable provided.

Base Dimensions (WxHxD): 235x54x110mm

Gooseneck length: 390mm

Weight: 1.15 kg

# CONFERENCE SYSTEMS



## PA EXCONF D

---

Expansion unit for CONFED system. Each expansion unit can be connected with a maximum of 60 bases spread over 6 lines (never exceed 30 units per line). Using four expansion units, the system can control up to a maximum of 254.



## PA CVMF13

---

MALE-FEMALE 13 m 8-Pin extension cable.



## PA CVMF6

---

MALE-FEMALE 6 m 8-Pin extension cable.



## PA CVMF3

---

MALE-FEMALE 3 m 8-Pin extension cable.



## PA CVMM3

---

MALE-MALE 3 m 8-Pin extension cable.





# PORTABLE SYSTEMS



# PORTABLE SYSTEMS



## PA MEG30

---

Hand grip megaphone / ABS shoulder strap

Controls: Talk button, Volume, Siren/Alarm

Output: Power 30 W

Power Supply: 8 x 1.5V alkaline type C size batteries

External Power Supply: DC 12 V – 2 A

Battery Life: Approx. 15 hours

Audible Range: 0.8 – 2 km (depending on operating conditions)

Construction: ABS

Dimensions: Ø 230 x L 350 mm

Weight: 1.65 Kg (batteries not included)



# AMPLIFIERS

# AMPLIFIERS



## PA AMP35E

Compact amplifier: 35W, 4/Ω-70/100V  
Speakers overload and short-circuit protection circuit • Led start-up indicator  
Main level control (Master)  
Separated Level Controls for 1÷2 and AUX inputs  
Bass and Treble tone adjustment  
2 MIC / MIC Phantom 48V / LINE inputs balanced on Euroblock terminals  
1 AUX Line RCA Input • MIC 1 Input with priority function  
4 outputs, two at constant impedance (8/4Ω) and two at constant voltage (70/100V)  
Power Supply 100-120V~ 50/60Hz (select 115V) or 220-240V~ 50/60Hz (select 230V)  
Weight 4.3 Kg



## PA AMP60E

Compact amplifier: 60W, 4/Ω-70/100V  
Speakers overload and short-circuit protection circuit • Led start-up indicator  
Main level control (Master)  
Separated Level Controls for 1÷2 and AUX inputs  
Bass and Treble tone adjustment  
2 MIC / MIC Phantom 48V / LINE inputs balanced on Euroblock terminals  
1 AUX Line RCA Input • MIC 1 Input with priority function  
4 outputs, two at constant impedance (8/4Ω) and two at constant voltage (70/100V)  
Power Supply 100-120V~ 50/60Hz (select 115V) or 220-240V~ 50/60Hz (select 230V)  
Weight 5.3 Kg



## PA AMP160XL

Professional mixer amplifier 160W - 70/100V- 4Ω  
Speaker short-circuit and overload protection circuit  
LED power indicator  
LED level indicator  
Master volume control  
Separate level controls for inputs 1÷5  
Low and high tone adjustment  
Lit knobs  
4 MIC/MIC Phantom 24/LINE balanced inputs on Euroblock terminal  
3 AUX switchable inputs from front selector  
1÷4 Inputs with VOX priority function / Contact on other inputs (selectable by dip-switch)  
MAIN - IN/OUT function  
3 outputs, one of which at constant 4Ω impedance and two at constant voltage (70/100V)  
Independent CHIME function for each input (routing)  
REC OUT output on RCA  
Balanced line level output on Euroblock terminal  
230/117V~ 50/60Hz autoswitch power supply  
Fins to fasten to a provided 1U 19" rack  
Dimensions (WxHxD): 439x44x300 mm  
483x44x300 mm - 1U 19" rack



## PA AMP03VR

Compact amplifier 30W, outputs 4/8/16Ω - 100V  
MP3 file recorder/player module  
Two MIC inputs  
One PHONO/AUX input switchable by selector  
LED power indicator  
Master volume control  
Separate MIC1 and MIC2 microphone volume controls  
AUX volume control  
Low and high tone adjustment  
Screw for earth connection  
Four outputs, three of which at constant voltage (100V/70V/25V) and one at constant impedance (4W)  
MIC1 input priority function  
Optional vehicle kit with amplifier fixing bracket and fused power cable  
Power supply: 230/117V~ 50-60Hz, 12Vdc  
Weight: 4.5 Kg





## PA ATMP240ZXL

4 Zone 240W Amplifier Mixer with Media Player  
 Zone paging function through dedicated PA RM4 microphone base (optional)  
 Overload and short circuit protection for each speaker outputs  
 LED power indicator  
 LED audio level indicator  
 Master level control  
 Separated Level Controls for 1÷4 zones and AUX inputs  
 Bass and Treble tone adjustment  
 Media Player equipped with remote control with FM radio tuner, MP3 player on SD / USB support and Bluetooth connection  
 N° 4 MIC / MIC Phantom 48V / LINE inputs balanced on Euroblock terminals.  
 N° 3 AUX inputs switchable by front selector/Inputs 1 ÷ 4 with independent priority function (VOX / Contact) on the other inputs selectable by dipswitch 1 ÷ 4  
 MAIN - IN/OUT Function  
 Main power output 4Ω / 70 / 100V on Euroblock terminal  
 N° 4 zone outputs at 100V on Euroblock terminal  
 N° 4 balanced line level zone outputs on Euroblock terminal  
 Independent CHIME function for each input (routing)  
 REC OUT on RCA  
 230/115 V~ 50 / 60 Hz power supply via voltage selector  
 19" 2U rack adapters included  
 Weight: 13.9Kg  
 Dimensions (WxHxD): 433x89x352mm  
 483x89x352mm – 2U rack 19"



## PA RM4

Paging Base for announcement on 4 zones, designed to be used with the ATMP240ZXL amplifier. It can make a microphone call on single zones, on a group of zones or on all zones.  
 ALL key for selecting all zones at the same time  
 Zone keys for selecting each single zone or groups of zones  
 TALK key for making the announcement  
 LED indicators  
 CHIME key to activate / deactivate the attention tone



## PA ATMP160XL

Combo receiver 160W - 70/100V- 4Ω  
 USB/SD MMC, BLUETOOTH integrated multimedia module and Digital AM/FM tuner  
 Speaker short-circuit and overload protection circuit  
 LED power indicator  
 LED level indicator  
 Master volume control  
 Separate level controls for inputs 1÷5  
 Low and high tone adjustment  
 Lit knobs  
 4 MIC/MIC Phantom 24/LINE balanced inputs on Euroblock terminal  
 3 AUX switchable inputs from front selector  
 1÷4 Inputs with VOX priority function / Contact on other inputs (selectable by dip-switch)  
 MAIN - IN/OUT function  
 3 outputs, one of which at constant 4Ω impedance and two at constant voltage (70/100V)  
 Independent CHIME function for each input (routing)  
 REC OUT output on RCA  
 Balanced line level output on Euroblock terminal  
 230/117V~ 50/60Hz autoswitch power supply  
 Fins to fasten to a provided 19" 2U rack  
 Dimensions (WxHxD): 439x88x300mm  
 483x88 x300mm - 19" 2U rack



## PA AUP160D

Professional power unit 160W - 70/100V- 4Ω  
 Speaker short-circuit and overload protection circuit  
 LED power indicator  
 LED level indicator  
 Master volume control  
 Low and high tone adjustment  
 Lit knobs  
 Balanced LINE input on Euroblock terminal  
 Balanced LINE output on Euroblock terminal  
 3 outputs, one of which at constant 4Ω impedance and two at constant voltage (70/100V)  
 230/117V~ 50/60Hz autoswitch power supply  
 Fins to fasten to a provided 1U 19" rack  
 Dimensions (WxHxD): 439x44x300mm  
 483x44x300mm - 1U 19" rack

# AMPLIFIERS



## PA AUP4250S

4-channel power unit without transformers.  
Power 4x250W. 4/8Ω 70/100V Outputs  
4 constant impedance outputs (4Ω)  
4 constant voltage outputs (70/100V) made electronically without the use of output transformers  
One balanced input for each channel  
One priority balanced input with independent level control for each channel  
Independent master control for each channel.  
Low and High tone control independent over the 4 channels  
Rear insertion independent PA-HF filter for each channel  
LED protection indicator  
LED signal presence indicator  
LED operating mode indicator (4 Ω/70V/100V)  
Switching power supply in SMPS technology (switch mode power supply) Fins to fasten to a 19" 2U rack  
Power Consumption: 2000VA  
Power supply: 230V~ / 117V~ 50-60 Hz  
Dimensions (WxHxD): 434x88.5x425mm – 19" 2U rack  
Weight: 10.35 kg



## PA AUP240B



240W class-D Power Amplifier  
Switching technology for power supply  
Class D power amplifier with low energy consumption  
Mounting in 19" rack with 1U height, for a smaller footprint and less heat dispersion  
Rated output power at 240W  
Constant impedance (8Ω) or constant voltage (100V) power output  
Balanced line input with phoenix connector and level control  
Output HPF filter with activation switch  
Built-in auto standby function for energy saving  
LED indicators for protect, clip, input and output  
Full short circuit, overload, high temperature, clip and DC protection  
230V AC and 24V DC power supply  
Speaker overload and short circuit protection circuit



## DPX1200PFC

2-channel Class D stereo amplifier  
STEREO / BRIDGE / PARALLEL mode  
Frequency response (+ 0.5 / -0.5 dB): 20 Hz - 20 KHz  
Output power (THD <1% 1kHz) 4Ω: 2x 600 W  
Power output (THD <1% 1kHz) 8Ω: 2x350W  
Output power BRIDGE 8Ω: 1200W  
2U rack19"  
Weight: 3.8Kg.



## DPX1700PFC

Class D 2-channel stereo amplifier  
STEREO / BRIDGE / PARALLEL mode  
Frequency response (+ 0.5 / -0.5 dB): 20 Hz - 20 KHz  
Output power (THD <1% 1kHz) 4Ω: 2x 850 W  
Power output (THD <1% 1kHz) 8Ω: 2x500W  
Output power BRIDGE 8Ω: 1700W  
2U rack19"  
Weight: 3.8Kg.



## DPX2500PFC

Class D 2-channel stereo amplifier  
STEREO / BRIDGE / PARALLEL mode  
Frequency response (+ 0.5 / -0.5 dB): 20 Hz - 20 KHz  
Output power (THD <1% 1kHz) 4Ω: 2x 1250 W  
Power output (THD <1% 1kHz) 8Ω: 2x700W  
Output power BRIDGE 8Ω: 2500W  
2U rack19"  
Weight: 4.2Kg.



# PRE-AMPLIFIERS, MIXER AND PROCESSORS



# PRE-AMPLIFIERS, MIXER AND PROCESSORS



## PA AMIX54Z

Stereo Matrix/Mixer with 5 line/micro inputs with addressable multimedia module (Tuner FM - MP3 reader)  
Five mic/line inputs on balanced COMBO and RCA Stereo  
Independent gain control over input channels 1~5 by means of a rear trimmer  
Phantom +48V that can be deselected for each input  
LED CLIP indicator for each channel input  
INPUT1 priority function over the other inputs that can be disabled  
Dip-switch (INPUT1~5) to assign the input to the outputs  
Independent volume controls (INPUT1~5)  
Four balanced stereo zones/outputs on Euroblock terminals  
Four signal presence indicators on the outputs  
Stereo/Mono selector on each output  
Independent volume controls for the four zone outputs  
MP3 multimedia player with FM radio freely addressable on the output zones  
Ground Lift  
Power supply selector 230/117V~ 50/60Hz  
Dimensions (WxHxD): 483x44.4x200mm - 19" 1U rack  
Weight: 3.4 kg



## PA AMIX63

Analogue mixer to mix microphone/line signals, 6 Micro XLR inputs, 3 RCA Line inputs  
High-quality design and manufacturing accuracy  
Six balanced COMBO mic/line inputs  
Three unbalanced RCA stereo line inputs  
Line/mic with phantom/mic input type selectors  
LED input signal indicators for each channel  
Adjustable MIC 1 priority function on the other inputs  
Independent gain controls for channels 1~9  
Two balanced XLR outputs (Left and Right)  
Balanced mono output  
RCA type stereo REC output (Left and Right)  
LED output signal level indicators (Left and Right)  
MASTER volume control  
Tone controls  
Emergency power terminals (24 V DC)  
Power supply selector 230V~ 50/60Hz (AMIX63V117 117V~ 50/60Hz)  
Dimensions (WxHxD): 483x44x195mm 19" 1U rack  
Weight: 2.9 kg

## PA FSHIFTER

Antilarsen processor  
Balanced line input on XLR connector  
Unbalanced line input on RCA connector  
Balanced line output on XLR connector  
Unbalanced line output on RCA connector  
LED indication of operating mode  
Switch power supply 117/230V~ 50/60Hz  
Dimensions (WxHxD): 483x44x195mm - 19" 1U Rack  
Weight: 32 kg



## PLAYMIX8

8 IN Compact Mixer  
 24bit FX DSP - 4 MONO MIC/LINE IN with 3 band EQ  
 -20 dB PAD and PHANTOM power  
 2 Low Noise MIC Preamplifiers - 2 STEREO LINE IN  
 Balanced MAIN outputs with XLR-M connectors  
 Bluetooth - MP3 Player/Recorder  
 Applications: home recording, education, personal mixer



## MQ12USB

Compact 12-input 4-bus mixer with effect and USB I/F  
 4 MONO MIC/LINE inputs, 2 STEREO MIC/LINE inputs and 2 STEREO LINE inputs  
 6 low-noise, very high-headroom microphone preamplifiers  
 PHANTOM power  
 'One-knob' COMPRESSOR with LED indicator on MONO channels  
 3-band EQ with sweep mids and LO-CUT filter  
 1 AUX send pre-fader and 1 AUX send post-fader  
 24bit studio-grade digital effect with 100 presets, 2-digit display and footswitch MUTE  
 Built-in USB interface for PC recording and playback  
 GROUS 1&2 with MIX routing and output  
 HEADPHONES and CONTROL ROOM outputs  
 Electronically balanced MAIN MIX outputs with XLR-M and 1/4" JACK connectors  
 Two 8-LED VU-METERS  
 Universal switching power supply 100-250V  
 Stage-proof construction and ultra-rugged metal chassis  
 Designed and engineered in Italy by PROEL

## MQ16USB

Compact 16-input 4-bus mixer with effect and USB I/F  
 8 MONO MIC/LINE inputs and 4 STEREO MIC/LINE inputs  
 12 low-noise, very high-headroom microphone preamplifiers  
 PHANTOM power  
 'One-knob' COMPRESSOR with LED indicator on MONO channels  
 3-band EQ with sweep mids and LO-CUT filter  
 3 AUX sends pre-fader e 1 AUX send post-fader  
 24bit studio-grade digital effect with 100 presets, 2-digit display and footswitch MUTE  
 Built-in USB interface with routing options for PC recording and playback  
 GROUS 1&2 with MIX routing and output  
 2-TRACK, HEADPHONES and CONTROL ROOM outputs  
 Electronically balanced MAIN MIX outputs with XLR-M and 1/4" JACK connectors  
 Two 12-LED VU-METERS  
 Universal switching power supply 100-250V  
 Stage-proof construction and ultra-rugged metal chassis



## RACKMQ16USB

Rack adapters for MQ16USB









## AUDIO SOURCE AND RECEIVERS

# AUDIO SOURCE AND RECEIVERS



## PA SOURCEPRO

---

COMBINED AUDIO SOURCE

USB/SD Card Reader with Bluetooth

FM RDS / DAB Tuner function

AUTO PLAY Function

Controls: MP3 PLAYER CONTROLS

RADIO TUNER CONTROLS

Power Supply: 230-117V~ 50/60Hz

RS232

Dimensions (WxHxD): 482.8x44x179mm - 1U rack 19"

Weight: 2.5kg



## PA STRWIFI

---



**High-end audio streaming receiver with network and Bluetooth connectivity**

Streaming music via ETHERNET network (WIFI and WIRED) with no distance limitation or thru BLUETOOTH 5.0 up to 15 meters. High quality music streaming with sample rate decoding up to 192kHz, 24bit. Supports streaming source from online services, smart device memory, USB pen drive, NAS, BLUETOOTH and line in. Spotify, Airplay, Qplay, DLNA, UPnP streaming protocols supported, 3rd party app compatible. Multiroom and multizone streaming enabled by multiple units connected in the same network.

Free iOS and Android app available with global online update for new features. Spotify, Deezer, Tidal, Qobuz, iHeartRadio, TuneIn, Napster online streaming services integrated to use in the app.

PC streaming from iTunes.

Analogue and Digital input for connecting external audio devices. EQ adjustment via app.

Preset playlist available for quick access





# SOUND SPEAKERS



# SOUND SPEAKERS



## PA PR10PL

ABS sound projector  
Loudspeaker: Full range  
Power: 10/5/2.5W @ 100V  
Frequency response: 160Hz-16kHz (-10dB)  
SPL (1W/m): 91dB  
SPL MAX (Pmax @ 1m): 101dB  
Coverage angle 1kHz/4kHz (-6dB): 130°/85°  
Colour: White (RAL 9010)  
Dimensions: Ø138-H190mm  
Weight: 1.9 kg  
U-type bracket included  
Protection rating: IP55



## PA PR10PLB

ABS sound projector  
Loudspeaker: Full range  
Power: 10/5/2.5W @ 100V  
Frequency response: 160Hz-16kHz (-10dB)  
SPL (1W/m): 91dB  
SPL MAX (Pmax @ 1m): 101dB  
Coverage angle 1kHz/4kHz (-6dB): 130°/85°  
Colour: Black  
Dimensions: Ø138-H190mm  
Weight: 1.9 kg  
U-type bracket included  
Protection rating: IP55



## PA PR30PL

ABS waterproof sound projector  
Loudspeaker: 5" Full range  
Power: 30/15/7.5/3.5/1.5W @ 100V 8Ω  
Frequency response: 125Hz-15kHz  
SPL (1W/m): 101dB  
SPL MAX (Pmax @ 1m): 110 dB  
Coverage angle 1kHz/4kHz (-6dB): 130°/90°  
Colour: White  
Dimensions: Ø178-H200mm  
Weight: 2.1 kg  
U-type bracket included  
Protection rating: IP56



## PA HSPL30

Music-type ABS waterproof wide-band Hi-Fi horn  
Loudspeaker: Full range  
Power: 30/15W @ 100V  
Frequency response: 120Hz-15kHz (-10dB)  
SPL (1W/m): 98dB  
SPL MAX (Pmax @ 1m): 113dB  
Coverage angle 1kHz/4kHz (-6dB):  
H: 110°/80°  
V: 90°/80°  
Dimensions (WxHxD): 366x172x272mm  
U type bracket included  
Protection rating: IP56



## PA WS04

ABS wall speaker  
 Loudspeaker: 6" Full range  
 Power: 10/5W @ 100V  
 Frequency response: 110Hz-13kHz (-10dB)  
 SPL (1W/m): 91dB  
 SPL MAX (Pmax @ 1m): 101dB  
 Coverage angle 1kHz/4kHz (-6dB): 110°/85°  
 Colour: White (RAL 9010)  
 Dimensions (WxHxD): 240x345x101mm  
 Weight: 1.6 kg  
 Fixing system by screw



## PA XE51CTX

Ceiling Speaker  
 Drivers: 5" woofer - 1" tweeter  
 Rated Noise Power 100h: 30 W  
 Power rating @ 100V: 30 / 15 / 7.5 W  
 Power rating @ 70V: 15 / 7.5 / 3.75 W  
 Impedance: 333 / 667 / 1332 Ω @ 100V  
                   333 / 667 / 1332 Ω @ 70V  
 Power selection: On Wires  
 Frequency Response (-10 dB): 90 - 20k Hz  
 Sensitivity at 1W (1 kHz, 1m / 4m): 89 / 77 dB  
 Sensitivity at 1W (Pink Noise 6dB Crest Factor, 1m / 4m): 86 / 74 dB  
 Max SPL (Pink Noise 6dB Crest Factor, 1m / 4m): 103 / 91 dB  
 Coverage Angle at 500 / 1k / 2k / 4k Hz (-6dB):  
 Hor.: 130° / 120° / 100° / 70°  
 Vert: 130° / 120° / 100° / 70°  
 Cabinet: White (RAL 9016)  
 Material: ABS / Iron  
 Environmental Type: A  
 Protection Degree: IP21C  
 Operating Temperature: -10 ÷ +40 °C (+14 ÷ +104 °F)  
 Relative humidity: < 95%  
 Dimensions (mm): 220 x 220 x 95 (W x L x D)  
 Mounting: Ceiling (190x190 mm / 7.5x7.5" hole)  
 Weight: 1.7 kg (3.75 lb)



## XE51CT

ABS ceiling recessed speaker  
 Loudspeaker: 5" Full range  
 Power: 10/5/2.5W @ 100V  
 Frequency response: 100Hz-20kHz (-10dB)  
 SPL (1W/m): 90dB  
 SPL MAX (Pmax @ 1m): 100 dB  
 Coverage angle 1kHz/4kHz (-6dB): 130°/100°  
 Colour: White (RAL 9010)  
 Dimensions (WxHxD): Ø191.5-H78mm  
 Weight: 1 kg  
 Assembly: ceiling recessed  
 Mounting hole: Ø165mm  
 Available in pairs (single price)

# SOUND SPEAKERS

## PA CS602WIFI



Stereo system consisting of two premium 2-way 6.5" ceiling speakers, one active and one passive.

6.5" Kevlar low frequency driver with rubber suspension.

1" pivoting aluminum dome tweeter with EOS waveguide design.

LF amplifier 50W @4ohm x2, HF amplifier 15W @8ohm x2.

Streaming music via ETHERNET network (WIFI and WIRED) with no distance limitation or thru BLUETOOTH 5.0 up to 15 meters.

High quality music streaming with sample rate decoding up to 192kHz, 24bit.

Supports streaming source from online services, smart device memory, NAS, BLUETOOTH and line in.

Spotify, Airplay, Qplay, DLNA, UPnP streaming protocols supported, 3rd party app compatible.

Multiroom and multizone streaming enabled by multiple units connected in the same network.

Free iOS and Android app available with global online update for new features.

Spotify, Deezer, Tidal, Qobuz, iHeartRadio, TuneIn, Napster online streaming services integrated to use in the app.

PC streaming from iTunes.

Analogue input for connecting external audio devices.

EQ adjustment via app.



## PA CSE06T

Metal ceiling speaker

Loudspeaker: 5" Full range

Power: 6/3W @ 100V

Frequency response: 110Hz-15kHz (-10dB)

SPL (1W/m): 90dB

SPL MAX (Pmax @ 1m): 98dB

Coverage angle 1kHz/4kHz (-6dB): 150°/95°

Colour: White (RAL 9010)

Dimensions: Ø204-H85mm

Weight: 0.7 kg

Assembly: ceiling recessed

Mounting hole: Ø175mm



## XE65CT

ABS 2-way hi-fi ceiling recessed speaker

Loudspeaker: W: 6.5" - T: 1"

Power: 20/10/5/2.5W @ 100V

Frequency response: 70Hz-20kHz (-10dB)

SPL (1W/m): 87dB

SPL MAX (Pmax @ 1m): 100 dB

Coverage angle 1kHz/4kHz (-6dB): 130°/80°

Colour: White (RAL 9010)

Dimensions: Ø204-H85mm

Weight: 1.2 kg

Assembly: ceiling recessed

Mounting hole: Ø179mm

Available in pairs (single price)





# SOUND SPEAKERS



## PA CO30S5

Aluminium high directivity column speaker  
Loudspeaker: 5x3" ¼  
Power: 7.5/15/30 W - 100V  
Frequency response: 200Hz-19kHz (-10dB)  
SPL (1W/m): 93dB  
SPL MAX (Pmax @ 1m): 108dB  
Coverage angle 1kHz/4kHz (-6dB): V:70°/20° H:160°/120°  
Colour: White  
Dimensions (WxHxD): 91x544x88mm  
Weight: 3.5 kg



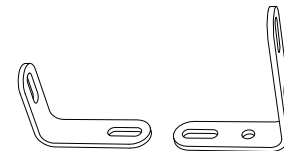
## PA CO60S10

Aluminium high directivity column speaker  
Loudspeaker: 10x3" ¼  
Power: 15/30/60 W @ 100V  
Frequency response: 180Hz-18kHz (-10dB)  
SPL (1W/m): 93dB  
SPL MAX (Pmax @ 1m): 111dB  
Coverage angle 1kHz/4kHz (-6dB): V:40°/20° H:160°/120°  
Colour: White  
Dimensions (WxHxD): 91x94 x88mm  
Weight: 6.2 kg



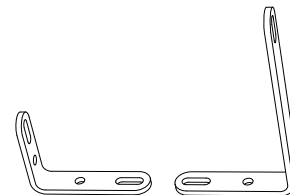
## PA CO120S15

Aluminium high directivity column speaker  
Loudspeaker: 10x3" ¼  
Power: 60/120W  
@ 100V Frequency response 170Hz-17kHz (-10dB)  
SPL (1W/m): 94dB  
SPL MAX (Pmax @ 1m): 115dB  
Coverage angle 1kHz/4kHz (-6dB): V:30°/20° H:160°/120°  
Colour: White  
Dimensions (WxHxD): 91x1339x88mm  
Weight: 8.9 kg



## PA SC1

Wall bracket for CO series column speakers



## PA SC2

Wall bracket for CO series column speakers



## PA CO4006

Aluminium high directivity column speaker  
Loudspeaker: W: 6x2" - T: 1"  
Power: 40/20/10W @ 100V  
Frequency response: 180Hz-18kHz (-10dB)  
SPL (1W/m): 91dB  
SPL MAX (Pmax @ 1m): 107 dB  
Coverage angle 1kHz/4kHz (-6dB): V:40°/30° H:170°/140°  
Colour: White  
Swivel bracket  
Dimensions (WxHxD): 67x505x65mm  
Weight: 2.2 kg



## PA CO4012

Aluminium high directivity column speaker  
Loudspeaker: W:12x2" - T: 1"  
Power: 40/20/10W @ 100V  
Frequency response: 180Hz-18kHz (-10dB)  
SPL (1W/m): 93dB  
SPL MAX (Pmax @ 1m): 109 dB  
Coverage angle 1kHz/4kHz (-6dB): V:30°/25° H:170°/150°  
Colour: White  
Swivel bracket  
Dimensions (WxHxD): 67x828x65mm  
Weight: 3.5 kg





# SOUND SPEAKERS



## PA HS15AL

Aluminium horn speaker  
Power: 15/10/5/3/1W @ 100V  
Frequency response: 280Hz-12.5kHz (-10dB)  
SPL (1W/m): 108dB  
SPL MAX (Pmax @ 1m): 120dB  
Coverage angle 1kHz/4kHz (-6dB): 90°/60°  
Colour: Grey  
Dimensions: Ø212.5x229.5mm  
Weight: 1.4 kg  
U-type bracket included  
Protection rating: IP55



## PA HS30AL

Aluminium horn speaker  
Power: 30/15/10/5/3/1W @ 100V  
Frequency response: 250Hz-16kHz (-10dB)  
SPL (1W/m): 109dB  
SPL MAX (Pmax @ 1m): 124dB  
Coverage angle 1kHz/4kHz (-6dB): 90°/60°  
Colour: Grey  
Dimensions: Ø259x261mm  
Weight: 1.8 kg  
U-type bracket included  
Protection rating: IP55



## PA H16R

Long range aluminium round horn, without driver Anti UV treatment  
To be used combined with HD60T driver  
Coverage angle 1kHz/4kHz (-6dB): 80°/65°  
Aluminium body  
Colour: Grey  
Dimensions: Ø407x325mm  
Weight: 1.5 kg  
U-type bracket included  
Protection rating: IP66



## PA HD60T

Waterproof driver unit for "H" series horns  
Power: 60/40/20W @ 100V  
Frequency response: 200Hz-6kHz (-10dB)  
SPL (1W/m): 115dB  
SPL MAX (Pmax @ 1m): 133dB  
Colour: Grey  
Weight: 1.4 kg  
Protection rating: IP55



## PA HS30

ABS horn speaker  
 Power: 30/15/10/5/3/1W @ 100V  
 Frequency response: 250Hz-16kHz (-10dB)  
 SPL (1W/m): 109dB  
 SPL MAX (Pmax @ 1m): 124dB  
 Coverage angle 1kHz/4kHz (-6dB): 95°/65°  
 Colour: White (RAL 9010)  
 Dimensions (WxHxD): 287x208x257.5mm  
 Weight: 1.7 kg  
 U-type bracket included  
 Protection rating: IP55



## PA STONE30



Stone-shape speaker  
 Loudspeaker: Two-way coaxial W:6.5" - T: ¾"  
 Power: 30/15W @ 100V - 15/7.5W @ 70V  
 Frequency Response (-10 dB): 95Hz -13.5kHz  
 Sensitivity at 1W (1 kHz, 1m/4m): 88 / 76dB  
 Max SPL (Pink Noise 6dB Crest Factor, 1m/4m): 102/90dB  
 Material Glass Fiber Reinforced Plastic / Aluminium  
 Colour: Brown  
 Dimensions (WxHxD): 255x245x230mm  
 Weight: 3.5kg  
 Protection rating: IP 56



## PA GS62

Outdoor Speaker  
 Drivers: 6" woofer - 0.75" tweeter  
 Rated Noise Power 100h: 30 W  
 Power rating @ 100V: 30 / 15 W  
 Power rating @ 70V: 15 / 7.5 / W  
 Impedance: 333 / 667 Ω @ 100V  
                   333 / 667 Ω @ 70V  
 Power selection: On Wires  
 Frequency Response (-10 dB): 95 - 13k Hz  
 Sensitivity at 1W (1 kHz, 1m / 4m): 82 / 70 dB  
 Sensitivity at 1W (Pink Noise 6dB Crest Factor, 1m / 4m): 79 / 67 dB  
 Max SPL (Pink Noise 6dB Crest Factor, 1m / 4m): 96 / 84 dB  
 Coverage Angle: Hor.: 360° - Vert: 180°  
 Cabinet: Dark Brown (RAL 8022)  
 Material: Glass Fiber Reinforced Plastic / Aluminium  
 Environmental Type: B  
 Protection Degree: IP56C  
 Operating Temperature: -25 ÷ +70 °C (-13 ÷ +158 °F)  
 Relative humidity: < 100%  
 Dimensions (mm): 270 x 320 (Φ x H)  
 Mounting: Garden Ground Floor  
 Weight: 5.4 kg (11.9 lb)



## PA FGS20

Hi-Fi garden speaker  
 Loudspeaker: Two-way coaxial  
 Power: 30/15/7.5W @ 100V  
 Frequency response: 80Hz-12kHz (-10dB)  
 SPL (1W/m): 97dB  
 SPL MAX (Pmax @ 1m): 110dB  
 Coverage angle 1kHz/4kHz (-6dB): 360°/360°  
 ABS body  
 Colour: Green  
 Dimensions (WxHxD): 280x400x280mm  
 Weight: 1.8 kg  
 Protection rating: IP55

# SOUND SPEAKERS



## XE35TB

Two-way monitor speaker  
Loudspeaker: W: 3.5" T: 1"  
Power: 15/7.5/4/2/1W @ 100/70V  
30W @ 8Ω  
Frequency response: 70Hz-20kHz (-10dB)  
SPL (1W/m): 85 dB  
SPL MAX (Pmax @ 1m): 97 dB  
Coverage angle 1kHz/4kHz (-6dB): 150°/100°  
ABS body  
Colour: Black  
Dimensions (WxHxD): 130x198x130mm  
Weight: 1.8 kg  
U-type bracket included  
Available in pairs (single price)



## XE55TB

Two-way monitor speaker  
Loudspeaker: W: 5" - T: 1"  
Power: 30/10/5/2/1W @ 100/70V  
60W @ 8Ω  
Frequency response: 70Hz-20kHz (-10dB)  
SPL (1W/m): 87dB  
SPL MAX (Pmax @ 1m): 101dB  
Coverage angle 1kHz/4kHz (-6dB): 140°/90°  
ABS body  
Colour: Black  
Dimensions (WxHxD): 181x240x172mm  
Weight: 3 kg  
U-type bracket included  
Available in pairs (single price)



## XE65TB

Two-way monitor speaker  
Loudspeaker: W: 6.5" - T: 1"  
Power: 40/20/10/5/2W @ 100/70V  
60W @ 8Ω  
Frequency response: 70Hz-20kHz (-10dB)  
SPL (1W/m): 87dB  
SPL MAX (Pmax @ 1m): 103dB  
Coverage angle 1kHz/4kHz (-6dB): 140°/90°  
ABS body  
Colour: Black  
Dimensions (WxHxD): 217x288x204mm  
Weight: 4.2 kg  
U-type bracket included  
Available in pairs (single price)



## PA SNBK

Adjustable wall swivel connection for Monitor line.  
Colour Black. Standard package: 2pcs





## XE35TW

---

Two-way monitor speaker

Loudspeaker: W: 3.5" - T: 1"

Power: 15/7.5/4/2/1W @ 100/70V  
30W @ 8Ω

Frequency response: 70Hz-20kHz (-10dB)

SPL (1W/m): 85dB

SPL MAX (Pmax @ 1m): 97 dB

Coverage angle 1kHz/4kHz (-6dB): 150°/100°

ABS body

Colour: White

Dimensions (WxHxD): 130x198x130mm

Weight: 1.8 kg

U-type bracket included

Available in pairs (single price)



## XE55TW

---

Two-way monitor speaker

Loudspeaker: W: 5" - T: 1"

Power: 30/10/5/2/1W @ 100/70V  
60W @ 8Ω

Frequency response: 70Hz-20kHz (-10dB)

SPL (1W/m): 87dB

SPL MAX (Pmax @ 1m): 101dB

Coverage angle 1kHz/4kHz (-6dB): 140°/90°

ABS body

Colour: White

Dimensions (WxHxD): 181x240x172mm

Weight: 3 kg

U-type bracket included

Available in pairs (single price)



## XE65TW

---

Two-way monitor speaker

Loudspeaker: W: 6.5" - T: 1"

Power: 40/20/10/5/2W @ 100/70V  
60W @ 8Ω

Frequency response: 70Hz-20kHz (-10dB)

SPL (1W/m): 87dB

SPL MAX (Pmax @ 1m): 103dB

Coverage angle 1kHz/4kHz (-6dB): 140°/90°

ABS body

Colour: White

Dimensions (WxHxD): 217x288x204mm

Weight: 4.2 kg

U-type bracket included

Available in pairs (single price)



## PA SNWH

---

Adjustable wall swivel connection for Monitor line.

Colour White. Standard package: 2pcs







# PROFESSIONAL ACOUSTIC SPEAKERS





## AX12C

Passive column speaker, 360 watt AES power (720 watt program), 130 dB Max, 100° horizontal coverage, 12 x 3.5" neodymium Full Range transducers, 16 Ohm impedance, extruded aluminum cabinet, transmission line back loading for low frequency pattern control, Speakon connections, Black colour, Dimensions 107x1166x193 mm, 15 kg. Optional White painting RAL9010 (code AX12CWH) or optional customized painting



## AX6C

Passive column speaker, 180 watt AES power (360 watt program), 124 dB Max, 100° horizontal coverage, 6 x 3.5" neodymium Transducers, 32 Ohm impedance, extruded aluminum cabinet, transmission line back loading for low frequency pattern control, Speakon connections, Black colour, Dimensions 107x620x193 mm, 8,7 kg. Optional White painting RAL9010 (code AX6CWH) or optional customized painting



## AX12LF

Passive column speaker for Low frequency extension, Power 320 watt AES (640 watt program), 124 dB Max, 360° horizontal coverage, 12 x 3.5" neodymium woofers, Extruded aluminum cabinet, Speakon connections, Black colour, Dimensions 107x1166x193 mm, 13,2 kg . Optional White painting RAL9010 (code AX12LFWH) or optional customized painting.



## KPTWAX12C

Wall bracket for AX12C column, black colour. Optional white painting RAL9010 (code KPTWAX12CWH) or optional customized painting.



## KPTWAX6C

Wall bracket for AX6C column, black colour. Optional white painting RAL9010 (code KPTWAX6CWH) or optional customized painting.



## AX16CL

Passive column speaker, 320 watt AES power (640 watt program), 128 dB Max, 80° horizontal coverage, 16 x 2.5" neodymium Full Range transducers, 32 Ohm impedance, extruded aluminum cabinet, transmission line back loading for low frequency pattern control, Speakon connections, Black colour, Dimensions 90x1190x154 mm, 11,5 kg.



### AX8CL

Passive column speaker, 160 watt AES power (320 watt program), 122 dB Max, 80° horizontal coverage, 8 x 2.5" neodymium Full Range transducers, 64 Ohm impedance, extruded aluminum cabinet, transmission line back loading for low frequency pattern control, Speakon connections, Black colour, Dimensions 90x654x154 mm, 6 kg.



### AX4CL

Passive column speaker, 80 watt AES power (160 watt program), 116 dB Max, 80° horizontal coverage, 4 x 2.5" neodymium Full Range transducers, 32 Ohm impedance, extruded aluminum cabinet, transmission line back loading for low frequency pattern control, Speakon connections, Black colour, Dimensions 90x390x154 mm, 4 kg.



### KPTWAX16CL

Wall mount bracket for up to 4 x AXCL or 6 x AX8CL



### KPTWAX16CLL

Wall mount bracket for 1 x AX16CL, 1 x AX8CL, up to 2 x AX4CL



### KPTWAX8CL

Wall mount bracket for AX8CL.

# PROFESSIONAL ACOUSTIC SPEAKERS



## SW18P

Compact direct radiation subwoofer, 800 watts AES Power (1,600 watts program), 132 dB Max, 1x18" Woofer, 8 Ohm, M20 pole mount socket, Birch plywood cabinet, Black water-based paint, 650x500x564mm, 40 kg. Optional White color RAL9010 finishing (code SW18PWH) or optional customized finish.



## SW210P

High Power, Low profile direct radiation subwoofer, 350+350 watts AES Power (700+700 program), 130 dB Max, 2x 10" woofer, 8+8 Ohm, M10 threaded inserts for suspension, M20 pole mount socket, Birch plywood cabinet, black water-based paint, 650x310x410 mm, 30 kg. Optional White RAL9010 finish (code W210PWH) or optional customized finish.



## ED150P

Compact 2-way passive speaker; 680 watts AES Power (1.360 watts program), 128 dB Max SPL, 15" Woofer + 1.4" HF compression driver (2.4"VC), Asymmetric coverage from 60° to 100° x 60°, 8 Ohm, 4-pole Speakon connections, M10 rigging points, Resistant black water-based paint, 450x765x400 mm 25 kg. Optional White RAL9010 finish (code ED150PWH) or optional customized finish.



## ED120P

Compact 2-way passive speaker, 680 watts AES Power (1.360 watts program), 128 dB Max SPL, 12" Woofer + 1.4" HF compression driver (2.4"VC), Asymmetric coverage from 60° to 100° x 60°, 8 Ohm, 4-pole Speakon connections, M10 rigging points, Resistant black water-based paint, 360x610x310 mm 18 kg. Optional White RAL9010 finish (code ED120PWH) or optional customized finish.



## ED80P

Compact 2-way passive speaker, 280 watts AES Power (560 watts program), 124 dB Max SPL, 8" Woofer + 1" HF compression driver (1"VC), Asymmetric coverage from 60° to 120° x 55°, 8 Ohm, 4-pole Speakon connections, M10 rigging points, Resistant black water-based paint, 250x450x230 mm 8 kg. Optional White RAL9010 finish (code ED80PWH) or optional customized finish.



## ED60P

Compact 2-way passive speaker, 100 watts AES Power (200 watts program), 114 dB Max SPL, 6" Woofer + 1" HF compression driver (1"VC), Asymmetric coverage from 70° to 120° x 55°, 8 Ohm, 4-pole Speakon connections, M10 rigging points, Resistant black water-based paint, 250x450x230 mm 8 kg. Optional White RAL9010 finish (code ED60PWH) or optional customized finish.





### ED25P

Compact 2-way passive speaker, 100 watts AES Power (200 watts program), 116 dB Max SPL, 2x5" Woofer + Dome tweeter in D'Appolito configuration, 80°x65°, 16 Ohm, 4-pole Speakon connections, M8 rigging points, Durable water-based black paint, 176x460x190mm 7 kg. Optional White RAL9010 finish (code ED25PWH) or optional customized finish.



### ED23PMKII

Compact 2-way passive speaker, 70 watts AES Power (140 watts program), 112 dB Max SPL, 2x3,5" Woofer + Dome tweeter in D'Appolito configuration, 80°x65°, 32 Ohm, 4-pole Speakon connections, M8 rigging points, Durable water-based black paint, 176x460x190mm 7 kg. Optional White RAL9010 finish (code ED23PMKIIWH) or optional customized finish.



### KPTED150B

C shape wall mounting bracket for ED150A - ED150P, black colour. Optional White RAL9010 finish (code KPTED150WH) or optional customized finish.



### KPTED120B

C shape wall mounting bracket for ED120A - ED120P, black colour. Optional White RAL9010 finish (code KPTED120WH) or optional customized finish.



### KPTED80B

C shape wall mounting bracket for ED80P, black colour. Optional White RAL9010 finish (code KPTED80WH) or optional customized finish.



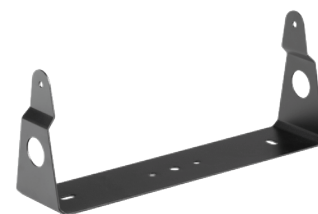
### KPTED60B

C shape wall mounting bracket for ED60P, black colour. Optional White RAL9010 finish (code KPTED60WH) or optional customized finish.



### KPTED25B

C shape wall mounting bracket for ED25P, black colour. Optional White RAL9010 finish (code KPTED25WH) or optional customized finish.



### KPTED23B

C shape wall mounting bracket for ED23PPMKII, black colour. Optional White RAL9010 finish (code KPTED23WH) or optional customized finish.

# PROFESSIONAL ACOUSTIC SPEAKERS



NEW

## LTX6P - LTX6PW

1" neodymium tweeter  
6.5" woofer  
8 Ohm Impedance  
90° H x 90° V coverage  
160 W peak power handling  
Frequency response 75 Hz - 20 kHz  
SPL 1w/1m 88 dB  
wall mount bracket included

LTX6P: Black color  
LTX6PW: White color



NEW

## LTX8P - LTX8PW

1" compression driver  
8" woofer  
8 Ohm Impedance  
90° H x 90° V coverage  
160 W peak power handling  
Frequency response 70 Hz - 20 kHz  
SPL 1w/1m 92 dB  
wall mount bracket included

LTX8P: Black color  
LTX8PW: White color



NEW

## LTX10P - LTX10PW

1" compression driver  
10" woofer  
8 Ohm Impedance  
90° H x 90° V coverage  
500W peak power handling  
Frequency response 60 Hz - 20 kHz  
SPL 1w/1m 94 dB

LTX10P: Black color  
LTX10PW: White color

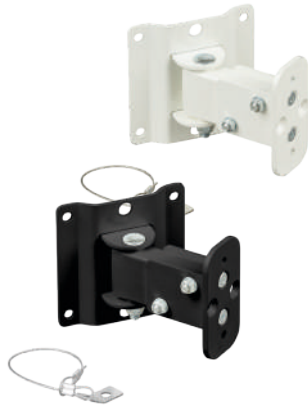


NEW

## LTX12P - LTX12PW

1" compression driver  
12" woofer  
8 Ohm Impedance  
90° H x 90° V coverage  
500W peak power handling  
Frequency response 50 Hz - 20 kHz  
SPL 1w/1m 96 dB

LTX12P: Black color  
LTX12PW: White color



## KPTLTx10 - KPTLTx10W



KPTLTx10: LTX10P Bracket - Black color  
KPTLTx10W: LTX10W Bracket - White color



## KPTLTx12 - KPTLTx12W



KPTLTx12: LTX12P Bracket - Black color  
KPTLTx12W: LTX12W Bracket - White color





# PROFESSIONAL ACOUSTIC SPEAKERS



## SPSK105BKF5

Multi-purpose steel speaker stand.  
Use with CO30S5 and CO60S10



## FRE300BK

Height adjustable lightweight aluminium speaker stand



## KP560

Wall mount heavy duty steel tube speaker stand. The directional mounting bracket allows both horizontal and vertical adjustment  
Width: 124 mm  
Height: 250 mm  
Depth: 380 mm  
Weight: 2.2 Kg  
Maximum load: 35 Kg  
Upper end tube: Ø 35 mm  
Colour: Matt black



## KP565

Wall mount heavy duty steel tube speaker stand. The directional mounting bracket - 280 mm length - allows both horizontal and vertical adjustment  
Width: 124 mm  
Height: 250 mm  
Depth: 280 mm  
Weight: 2.1 Kg  
Maximum load 35 Kg  
Upper end tube: Ø 35 mm  
Colours: Matt black



## S10A

System type Hybrid Band Pass subwoofer  
 Loudspeaker: 10" woofer with 2"VC  
 Amplifier Continuous Power: 350 W  
 Frequency Response: 46 Hz - 160 Hz  
 Max SPL: 119 dB  
 Connectors IN: 2 x NEUTRIK COMBO  
 OUT: 2 x NEUTRIK XLR-M  
 LINK: 2 x NEUTRIK XLR-M  
 Controls: Volume, GND lift  
 X-over Frequency, Phase  
 Power Supply: 230 VAC or 120 VAC 50/60 Hz  
 Weight: 14 kg (30.8lb)  
 Cabinet :15/18 mm plywood  
 Black anti-scratch paint  
 1.5 mm metal grille  
 2 handles  
 1 x pole socket  
 Dimensions (W x H x D) 315x420x495 mm



## S15A

System type: Hybrid Band Pass subwoofer  
 Loudspeaker: 15" woofer with 3"VC  
 Amplifier Continuous Power: 600 W  
 Frequency Response: 40 Hz - 160 Hz  
 Max SPL: 129dB  
 Connectors IN: 2 x NEUTRIK COMBO  
 OUT: 2 x NEUTRIK XLR-M  
 LINK: 2 x NEUTRIK XLR-M  
 Controls: Volume, GND lift  
 X-over Frequency, Phase  
 Power Supply 230 VAC or 120 VAC 50/60 Hz  
 Cabinet: 15/18 mm plywood  
 Black anti-scratch paint  
 1.5 mm metal grille  
 2 handles  
 1 x pole socket  
 4 x 75 mm wheels  
 Dimensions (W x H x D): 435x570x560 (660 with wheels) mm  
 Weight: 26 kg



## S15P

System type: Hybrid Band Pass subwoofer  
 Loudspeaker: 15" woofer with 3"VC  
 Impedance: 8 Ω  
 Power Continuous (AES): 400 W  
 Power Program: 800 W  
 Power Peak: 1600 W  
 Frequency Response: 40 Hz - 160 Hz  
 Sensitivity: 97 dB @ 1 W/1 m  
 Connectors: 2 x NEUTRIK SPEAKON (IN/LINK)  
 Cabinet 15/18 mm plywood  
 Black anti-scratch paint  
 1.5 mm metal grille  
 2 handles  
 1 x pole socket  
 4 x 75 mm wheels  
 Dimensions (W x H x D): 435x570x560 (660 with wheels) mm  
 Weight: 24.5 kg

# PROFESSIONAL ACOUSTIC SPEAKERS



## S18A

System type: Hybrid Band Pass subwoofer  
Loudspeaker: 18" woofer with 4"VC  
Amplifier Continuous Power: 600 W  
Frequency Response: 36 Hz - 140 Hz  
Max SPL: 131 dB  
Connectors: IN 2 x NEUTRIK COMBO  
OUT: 2 x NEUTRIK XLR-M  
LINK: 2 x NEUTRIK XLR-M  
Controls: Volume, GND lift  
X-over Frequency, Phase  
Power Supply 230 VAC or 120 VAC 50/60 Hz  
Cabinet: 15/18 mm plywood  
Black anti-scratch paint  
1.5 mm metal grille  
2 handles  
1 x pole socket  
4 x 75 mm wheels  
Dimensions (W x H x D): 508x630x645 (745 with wheels) mm  
Weight: 36 kg



## S18P

System type: Hybrid Band Pass subwoofer  
Loudspeaker: 18" woofer with 4"VC  
Nominal Impedance: 8  $\Omega$   
Power Continuous (AES): 500 W  
Power Program: 1000 W  
Power Peak: 2000 W  
Frequency Response: 36 Hz - 160 Hz  
Sensitivity: 98 dB @ 1 W/1 m  
Connectors: 2 x NEUTRIK SPEAKON (IN/LINK)  
Cabinet 15/18 mm plywood  
Black anti-scratch paint  
1.5 mm metal grille  
2 handles  
1 x pole socket  
4 x 75 mm wheels  
Dimensions (W x H x D): 508x630x645 (745 with wheels) mm  
Weight 33 kg







**LNE SYSTEMS**



# LNE SYSTEMS

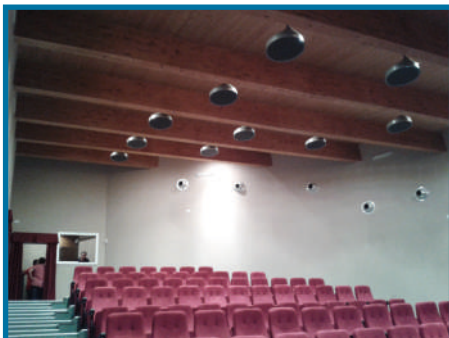


## DS112P

LNE SYSTEM Low Noise Emission  
Two-way high directivity System MTM circular configuration  
Input power rating (continuous): 300W (8Ω)  
Input power rating (peak): 600W (8Ω)  
Impedance: 8Ω  
Frequency response: 110Hz-16kHz (-3dB), 80Hz-18kHz (-10dB)  
SPL MAX (Pmax @ 1m): 124dB  
Low frequencies: 12 x 3.5"  
High frequencies: 1 x 1" compression driver  
Coverage angle: <78°  
Colour: Standard RAL 9007  
Colour Custom: (RAL CODE) Minimum 20 pcs  
Weight: 9 kg  
Dimensions: Ø510-H208mm  
Protection rating: IP55

## DS112PLF

Low frequency extension for DS112P  
Input power rating (continuous): 300W (8Ω)  
Input power rating (peak): 600W (8Ω)  
Impedance: 8Ω  
Frequency response: 75Hz - 180Hz (-3dB) processed  
SPL MAX (Pmax @ 1m): 126dB  
Low frequencies: 12 x 3.5"  
Coverage angle: <78°  
Colour: Standard RAL 9007  
Colour Custom: (RAL CODE) Minimum 20 pcs  
Weight: 9,4 kg  
Dimensions: Ø510-H208mm  
Protection rating: IP55







# MICROPHONES



# MICROPHONES



## PA BM101

General announcement active call station with automatic compressor, dynamic microphone, programmable talk button (PTT or ON/OFF), level output adjustment trimmer, chime level trimmer, selectable 2 or 3 tone chime and smart priority management. Power supply from RJ45 cable or 24Vdc local adaptor.



## PA BM102

General announcement call station with dynamic microphone, Push to talk button and priority output contact (Normally Open).



## PA BMG2

Table microphone base, with gooseneck microphone with light ring  
Sensitivity:  $-40\text{dB} \pm 2\text{dB} / 100\Omega \pm 30\%$   
Frequency response: 40Hz-20kHz (-3dB)  
Power supply: Phantom 48Vdc Batteries 3V (2x AA)  
Gooseneck length: 445 mm  
Switch: ON-OFF  
Connector: XLR  
Dimensions (WxHxD): 115x140x30mm  
Weight: 0.7 kg



## PA MIC62W

Boundary condenser microphone  
table or wall low profile  
Condenser capsule  
One-way  
Frequency response: 60Hz-16kHz  
Sensitivity:  $-36\pm 3\text{dB} @ 1\text{kHz}$   
Impedance:  $200\Omega \pm 30\% - @ 1\text{kHz}$   
Voltage: 9V~52Vdc  
Cable length: 4.56m  
Weight: 0.250Kg (without cable)  
Dimensions (WxHxD): 75x20x100mm  
Colour: White



## PA MG400

One-way electret gooseneck microphone  
Sensitivity: 7mV/Pa  
Impedance: 200Ω balanced  
Frequency response: 150Hz-18kHz (-3dB)  
Phantom power supply: 12-52Vdc  
Gooseneck length: 400mm  
Connector: XLR  
Dimensions: H400mm



## PA BMT

Microphone base for gooseneck MG400/500,  
connectors XLR-3P. BISTABLE ON/OFF KEY



## PA MG500

One-way, electret gooseneck microphone  
Sensitivity: 7mV/Pa  
Impedance: 200Ω balanced  
Frequency response: 150Hz-18kHz (-3dB)  
Phantom power supply: 12-52Vdc  
Gooseneck length: 500mm  
Connector: XLR  
Dimensions: H500mm



## PA BMS4

Metal base, table mounting by screws, XLR connector



## DM580LC

Vocal microphone with dynamic capsule  
Particularly tailored for vocal applications  
Uniform cardioid pattern for isolating the main sound source and  
avoiding feedbacks - Durable metal construction  
On/off switch for on-stage control  
Steel mesh ball grille with integral filter for reducing wind noise  
4.5 mt XLR cable and microphone holder included  
Frequency Response 70 - 14000 Hz  
Sensitivity -55 dB  
Max Spl for 1% THD 135 dB  
Impedance 600 Ω  
Connector 3 pin XLR male  
Weight 275 g - Dimensions H 195 x Ø 50 mm



## DST110BK

Triangular desktop heavy cast iron base with telescopic boom  
Base dimension: W 185 x D 188 mm  
Minimum height: 425 mm  
Maximum height: 580 mm  
Weight: 3,06 kg  
Boom length: 365 / 520 mm  
Color: Base in matt black / tube in black



# MICROPHONES



## APM20

Special rubber microphone holder (Ø Min-Max: 22 - 26 mm).  
Double thread for microphone stand: 3/8" e 5/8".



## APM40

5/8" - 3/8" universal screw link for microphone stands.



## APM30

ABS microphone clip holder (Ø Min-Max: 20 - 32 mm). Double  
thread for microphone stand: 3/8" e 5/8".



## APM35B

Big ABS microphone holder (Ø Min-Max: 30 - 35 mm).



## OST110BK

Professional straight microphone stand with anti-vibration rubber  
ring iron-cast base  
Base dimension: Ø 300 mm  
Minimum height: 950 mm  
Maximum height: 1650 mm  
Weight: 5.10 kg  
Available colors: Matt black



## RSM200BK

Professional telescopic boom microphone stand with tripod die-  
cast aluminium base  
Base dimension: Ø 700 mm  
Minimum height: 950 mm - Maximum height: 1600 mm  
Weight: 2,7 kg  
Color: Matt black  
Adjustable boom: 565 / 860 mm



### AETHERM1MD

AETHERM1M Wireless Microphone is a professional UHF, PLL controlled, true diversity system. It's equipped with channel Scan and IR sync. - 388 channel for simultaneous use of up to 24 units. - 100 meter range. - ABS case. - 823-865 Mhz (AETHERM1MD). - Handheld transmitter with supercardioid capsule



### AETHERM1HD

AETHERM1M Wireless Microphone is a professional UHF, PLL controlled, true diversity system. It's equipped with channel Scan and IR sync. - 388 channel for simultaneous use of up to 24 units. - 100 meter range. - ABS case. - 823-865 Mhz (AETHERM1MD). - Bodypack transmitter - Guitar/Bass cable is INCLUDED



### AETHERBOOST

Antenna amplifier for AETHER wireless systems equipped with inputs and outputs in BNC format



### AETHERANT

Dipole array directional antenna with cardioid polar pattern featuring a high rejection of RF signals from off-axis areas. Operating range between 470 and 900 Mhz. It can be mounted on a microphone stand, suspended from the ceiling or mounted on the wall



### AETHERSPLIT

Active UHF antenna distributor  
Working frequency: UHF broadband  
Power Supply: 110-230V ~ 50 / 60Hz - 12Vdc adapter



### HCM08PRO

Very small size and super light-weight flexible miniature microphone 3.5 mm permanently polarized condenser capsule. Double wind screen system for use in theatre and speech applications 3 adaptors included (AD4SH-AD3SE-AD3AK). Replaceable cable







# RACK AND ACCESSORIES

# RACK AND ACCESSORIES



## STUDIORKXL08

19" Standard 8 Unit professional Rack container, matt black painted steel, 4 castors  
Dimensions (WxHxD): 560x467x580mm  
Weight: 17,9 Kg



## PXCOVER08N

Plexiglass door for 8-unit STUDIORKXL



## STUDIORKXL12

19" Standard 12 Unit professional Rack container, matt black painted steel, 4 castors  
Dimensions (WxHxD): 560x646x580mm  
Peso: 21,7 Kg



## PXCOVER12N

Plexiglass door for 12-unit STUDIORKXL



## STUDIORKXL36

19" Standard 36 Unit professional Rack container, matt black painted steel, 4 castors  
Dimensions (WxHxD): 560x1718x580mm  
Peso: 39 Kg



## PA STF1

Bracket for heavy apparatus racks using purposes (AUP120/240/480/AUP4125/4250s etc.).  
Suitable for STUDIORKXL series rack



## FSR2260

---

19" Standard 22 Unit professional Rack container, matt black painted steel, with openable door, sides and back, 4 castors. Top with fan unit with thermostat.  
Dimensions (WxHxD): 600x1093x600mm



## FSR2760

---

19" Standard 27 Unit professional Rack container, matt black painted steel, with openable door, sides and back, 4 castors. Top with fan unit with thermostat.  
Dimensions (WxHxD): 600x1313x600mm



## FSR3260

---

19" Standard 32 Unit professional Rack container, matt black painted steel, with openable door, sides and back, 4 castors. Top with fan unit with thermostat.  
Dimensions (WxHxD): 600x1533x600mm



## FSR3760

---

19" Standard 37 Unit professional Rack container, matt black painted steel, with openable door, sides and back, 4 castors. Top with fan unit with thermostat.  
Dimensions (WxHxD): 600x1753x600mm



## FSR4260

---

19" Standard 42 Unit professional Rack container, matt black painted steel, with openable door, sides and back, 4 castors. Top with fan unit with thermostat.  
Dimensions (WxHxD): 600x2000x600mm



## FSRSHELF02

---

19" rack metal sliding shelf to be used on the new FSR rack cabinets only Matt black finish

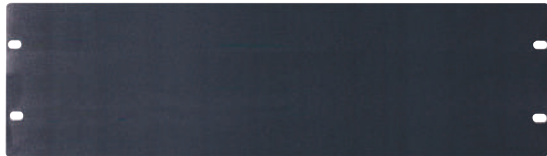


# RACK AND ACCESSORIES



## PA ACC

50A Circuit breaker main switch 19" Rack panel with 6 VDE sockets.  
1 Modular unit height.



## RK3L

3-unit 19" rack blank panel



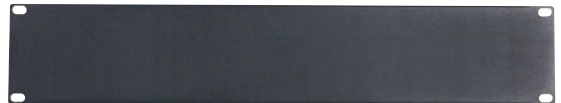
## RK4L

4-unit 19" rack blank panel



## RK1L

1-unit 19" rack blank panel



## RK2L

2-unit 19" rack blank panel



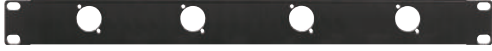
## RK1NV

19" 1 rack unit ventilation panel



## RK2NV

19" 2 rack unit ventilation panel



## RK4N

---

19" 1U Rack Panel  
4 Plug mounting holes for XLR/SPEAKON panel



## RK6N

---

19" 1U Rack Panel  
6 Plug mounting holes for XLR/RCA/SPEAKON panel



## RK8N

---

19" 1U Rack Panel  
8 Plug mounting holes for XLR/RCA/SPEAKON panel



## RK12N

---

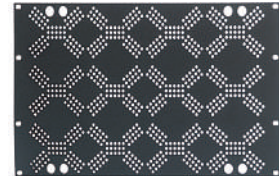
19" 1U Rack Panel  
12 Plug mounting holes for XLR/RCA/SPEAKON panel



## RK2VP

---

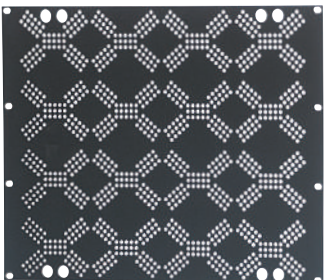
2-unit back protection Rack panel



## RK6VP

---

6-unit back protection Rack panel



## RK8VP

---

8-unit back protection Rack panel

# RACK AND ACCESSORIES



## ADRK2AZ

---

19" 2U rack assembly shelf/adaptor



## ADRK3AZ

---

19" 3U rack assembly shelf/adaptor



## ADRK2CR

---

Lockable 19" - 2U - steel construction metal rack drawer



## ADRK3CR

---

Lockable 19" 3U rack metal drawer



## ADRK4CR

---

Lockable 19" 4U rack metal drawer





# VOLUME CONTROLS

# VOLUME CONTROLS



## PA TRV12A

Recessed volume attenuator for 100V lines. 12W transformer on European square box. With 24Vdc bypass relay.



## PA TRV50A

Recessed volume attenuator for 100V lines. 50W transformer on European square box. With 24Vdc bypass relay.



## PA TRV6B

Recessed volume attenuator for 100V lines. 6W transformer on 503 box. With 24Vdc bypass relay.



## PA TRV30B

Recessed volume attenuator for 100V lines. 30W transformer on 503 box. With 24Vdc bypass relay.



## PA TRV60B

Recessed volume attenuator for 100V lines. 60W transformer on 503 box. With 24Vdc bypass relay.



## PA TRV120B

Recessed volume attenuator for 100V lines. 120W transformer on 503 box. With 24Vdc bypass relay.

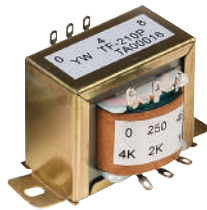




# LINE TRANSFORMERS



# LINE TRANSFORMERS



## PA TR40

---

Audio transformer: 100V-24/12/6/3/1.5W  
Primary impedance: 416-816-1660-3300-6600Ω  
Secondary impedance: 8-4Ω



## PA TR100

---

Audio transformer: 100V-40/20/10/5/2.5W  
Primary impedance: 250-490-1000-2000-4000Ω  
Secondary impedance: 8-4Ω



## PA MATCHBOX

---

Universal audio adapter and decoupler with isolation transformer.  
LINE/LINE - 100V/LINE



# CABLES AND CONNECTORS

# CABLES AND CONNECTORS



## HPC90

Balanced AES/EBU Audio Digital cable (2 x 0,22 mm<sup>2</sup>) small diameter aluminium foil shielded flame resistant overall jacket. - O.F.C. (Oxygen Free Copper). Black color. 100 m reel only order



## HPC210BK

Professional balanced microphone cable (2 x 0,22 mm<sup>2</sup>) with flexible overall jacket - Dense spiral red copper shield - O.F.C. (Oxygen Free Copper). 100 m reel only order



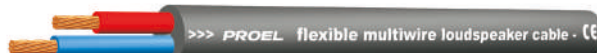
## HPC210FR

Balanced microphone cable (2 x 0,34 mm<sup>2</sup>) with flexible flame resistant overall jacket particularly suitable for fixed installations - O.F.C. (Oxygen Free Copper). 100 m reel only order



## HPC610BK

Ultra-flexible 2 twisted conductors speaker cable for passive loudspeakers - 2 x 1,5 mm<sup>2</sup> section. 100 m reel only order



## HPC620BK

Ultra-flexible 2 twisted conductors speaker cable for passive loudspeakers - 2 x 2,5 mm<sup>2</sup> section. 100 m reel only order

## LAN5S

New professional CAT. 5e S-FTP cable for Ethernet connections, featuring unique inner filler to maintain electrical characteristics in portable applications; double shielding manufactured from aluminum-mylar foil and tinned copper braid. Particularly suitable for mobile applications. The outer sleeve is manufactured from polyurethane compound. 100 m reel only order



## HPC813

Single shielded antenna cable  
100 m reel only order





## **BULK250LU5**

Professional assembled balanced cable with PROEL XLR 3P male cable mount - PROEL XLR 3P female cable mount. 5 m length



## **BULK250LU10**

Professional assembled balanced cable with PROEL XLR 3P male cable mount - PROEL XLR 3P female cable mount. 10 m length



## **BULK250LU15**

Professional assembled balanced cable with PROEL XLR 3P male cable mount - PROEL XLR 3P female cable mount. 15 m length



## **BULK210LU2**

New professional assembled balanced cable with PROEL Ø 6,3 mm Stereo jack plug, metal housing - PROEL XLR 3P female cable mount. 2 m length



## **CHLP250LU15**

Professional assembled "STEREO" cable with 2 x YONGSHENG RCA plug - 2 x YONGSHENG RCA plug, black housing and gold plated connections. Length: 1.5 m



## **CHLP260LU15**

Professional assembled "ADAPTER" cable with YONGSHENG RCA cable mount plug - YONGSHENG XLR 3P male cable mount, black housing and gold plated connections. Length: 1.5 m



## **CHLP270LU15**

Professional assembled "ADAPTER" cable with YONGSHENG RCA cable mount plug - YONGSHENG XLR 3P female cable mount, black housing and gold plated connections. Length: 1.5 m

# CABLES AND CONNECTORS



## XLR3FVPRO

Professional 3-pole XLR cable mount female socket, nickel plated die cast aluminium shell and nickel plated aluminium coupling ring, inner nylon clamping system with PVC terminal spring



## XLR3MVPRO

Professional 3-pole XLR cable mount male plug, nickel plated die cast aluminium shell and nickel plated aluminium coupling ring, inner nylon clamping system with PVC terminal spring



## MRCA25BK

RCA cable mount male plug with gold plated contacts, black aluminium shell and Ø 6.2 mm flexible cable spring



## AT290

Professional metal adapter: 3-pole XLR female socket -> Ø 6.3 mm. mono jack male plug



## AT510

Professional metal adapter: 3-pole XLR female socket -> RCA male plug.



## S5CPRO

Professional Ø 6.3 mm - 1/4" Stereo jack plug, with die cast aluminium shell, nickel plated contacts and Ø 7.3 mm flexible cable spring



## NL4FXXWS

4 pole cable connector NEUTRIK "SPEAKON", chuck type strain relief for cable Ø 6 - 12 mm, intermates with 4-pole chassis connector.



## NL2FXXWS

2 pole cable connector NEUTRIK "SPEAKON", chuck type strain relief for cable Ø 6 - 12 mm, intermates with 2-pole chassis connector and makes contact with +1/-1.



## NL2MPXX

NEUTRIK "SPEAKON" panel mount male receptacle with small square flange, air tight, 2 poles.



## NL4MPXX

NEUTRIK "SPEAKON" panel mount male receptacle with small square flange, air tight, 4 poles.



## FRCA20RD

RCA panel mount female receptacle with square flange



## FRCA20WH

RCA panel mount female receptacle with square flange



## XLR3MDL

3-pole XLR panel mount solder aluminium male receptacle



## XLR3FDL

3-pole XLR panel mount solder aluminium female receptacle with latch



## NE8FDV

Neutrik RJ45 panel mount female



# ALPHABETICAL INDEX

CODE	PAGE	CODE	PAGE	CODE	PAGE	CODE	PAGE
<a href="#">ADRK2AZ</a>	74	<a href="#">CHLP270LU15</a>	81	<a href="#">KP560</a>	58	<a href="#">PA A31TB-PA A31TW</a>	12
<a href="#">ADRK2CR</a>	74	<a href="#">DM580LC</a>	65	<a href="#">KP565</a>	58	<a href="#">PA A51TB-PA A51TW</a>	12
<a href="#">ADRK3AZ</a>	74	<a href="#">DPX1200PFC</a>	32	<a href="#">KPTED120B</a>	55	<a href="#">PA AC60T</a>	15
<a href="#">ADRK3CR</a>	74	<a href="#">DPX1700PFC</a>	32	<a href="#">KPTED150B</a>	55	<a href="#">PA AC61T</a>	15
<a href="#">ADRK4CR</a>	74	<a href="#">DPX2500PFC</a>	32	<a href="#">KPTED23B</a>	55	<a href="#">PA ACC</a>	72
<a href="#">AE300</a>	6	<a href="#">DS112P</a>	62	<a href="#">KPTED25B</a>	55	<a href="#">PA AC012T</a>	16
<a href="#">AE604</a>	6	<a href="#">DS112PLF</a>	62	<a href="#">KPTED60B</a>	55	<a href="#">PA AH50T</a>	14
<a href="#">AETHERANT</a>	67	<a href="#">DST110BK</a>	65	<a href="#">KPTED80B</a>	55	<a href="#">PA AHS30T</a>	17
<a href="#">AETHERBOOST</a>	67	<a href="#">ED120P</a>	54	<a href="#">KPTLTX10-KPTLTX10W</a>	57	<a href="#">PA AIW50FRAME</a>	14
<a href="#">AETHERRM1HD</a>	67	<a href="#">ED150P</a>	54	<a href="#">KPTLTX12-KPTLTX12W</a>	57	<a href="#">PA AIW50T</a>	14
<a href="#">AETHERRM1MD</a>	67	<a href="#">ED23PMKII</a>	55	<a href="#">KPTWAX12C</a>	52	<a href="#">PA AMIX54Z</a>	34
<a href="#">AETHERSPLIT</a>	67	<a href="#">ED25P</a>	55	<a href="#">KPTWAX16CL</a>	53	<a href="#">PA AMIX63</a>	34
<a href="#">APM20</a>	66	<a href="#">ED60P</a>	54	<a href="#">KPTWAX16CLL</a>	53	<a href="#">PA AMP03VR</a>	30
<a href="#">APM30</a>	66	<a href="#">ED80P</a>	54	<a href="#">KPTWAX6C</a>	52	<a href="#">PA AMP160XL</a>	30
<a href="#">APM35B</a>	66	<a href="#">FRCA20RD</a>	83	<a href="#">KPTWAX8CL</a>	53	<a href="#">PA AMP35E</a>	30
<a href="#">APM40</a>	66	<a href="#">FRCA20WH</a>	83	<a href="#">LAN5S</a>	80	<a href="#">PA AMP60E</a>	30
<a href="#">AT290</a>	82	<a href="#">FRE300BK</a>	58	<a href="#">LTX10P-LTX10PW</a>	56	<a href="#">PA AP50T</a>	13
<a href="#">AT510</a>	82	<a href="#">FSR2260</a>	71	<a href="#">LTX12P-LTX12PW</a>	56	<a href="#">PA AP52T</a>	13
<a href="#">AX12C</a>	52	<a href="#">FSR2760</a>	71	<a href="#">LTX6P-LTX6PW</a>	56	<a href="#">PA ATMP160XL</a>	31
<a href="#">AX12LF</a>	52	<a href="#">FSR3260</a>	71	<a href="#">LTX8P-LTX8PW</a>	56	<a href="#">PA ATMP240ZXL</a>	31
<a href="#">AX16CL</a>	52	<a href="#">FSR3760</a>	71	<a href="#">MQ12USB</a>	35	<a href="#">PA AUP160D</a>	31
<a href="#">AX4CL</a>	53	<a href="#">FSR4260</a>	71	<a href="#">MQ16USB</a>	35	<a href="#">PA AUP240B</a>	32
<a href="#">AX6C</a>	52	<a href="#">FSRSHELF02</a>	71	<a href="#">MRCA25BK</a>	82	<a href="#">PA AUP4250S</a>	32
<a href="#">AX8CL</a>	53	<a href="#">HCM08PRO</a>	67	<a href="#">NE8FDV</a>	83	<a href="#">PA BM101</a>	64
<a href="#">BULK210LU2</a>	81	<a href="#">HPC210BK</a>	80	<a href="#">NL2FXXWS</a>	82	<a href="#">PA BM102</a>	64
<a href="#">BULK250LU10</a>	81	<a href="#">HPC210FR</a>	80	<a href="#">NL2MPXX</a>	83	<a href="#">PA BMCD</a>	25
<a href="#">BULK250LU15</a>	81	<a href="#">HPC610BK</a>	80	<a href="#">NL4FXXWS</a>	82	<a href="#">PA BMDD</a>	25
<a href="#">BULK250LU5</a>	81	<a href="#">HPC620BK</a>	80	<a href="#">NL4MPXX</a>	83	<a href="#">PA BMG2</a>	64
<a href="#">CHLP250LU15</a>	81	<a href="#">HPC813</a>	80	<a href="#">OST110BK</a>	66	<a href="#">PA BMS4</a>	65
<a href="#">CHLP260LU15</a>	81	<a href="#">HPC90</a>	80	<a href="#">PA 48VDCER1</a>	10	<a href="#">PA BMT</a>	65

CODE	PAGE	CODE	PAGE	CODE	PAGE	CODE	PAGE
PA CO120S15	44	PA EXCONFD	26	PA STRWIFI	38	RSM200BK	66
PA CO30S5	44	PA FGS20	47	PA TR100	78	S10A	59
PA CO4006	45	PA FSHIFTER	34	PA TR40	78	S15A	59
PA CO4012	45	PA GS62	47	PA TRV120B	76	S15P	59
PA CO60S10	44	PA H16R	46	PA TRV12A	76	S18A	60
PA CONFD	25	PA HD60T	46	PA TRV30B	76	S18P	60
PA CS-6HT60BS	17	PA HS15AL	46	PA TRV50A	76	S5CPRO	82
PA CS30HSL	43	PA HS30	47	PA TRV60B	76	SPSK105BKF5	58
PA CS602WIFI	42	PA HS30AL	46	PA TRV6B	76	STUDIORKXL08	70
PA CS81HF	43	PA HSPL30	40	PA WP88	22	STUDIORKXL12	70
PA CSB10	43	PA INCOM2	20	PA WS04	41	STUDIORKXL36	70
PA CSE06T	42	PA MATCHBOX	78	PA WS50EN	16	SW18P	54
PA CVMF13	26	PA MDAC8V2	10	PA XE51CTX	41	SW210P	54
PA CVMF3	26	PA MDACTV	10	PLAYMIX8	35	WCS1000CHV2	24
PA CVMF6	26	PA MEG30	28	PXCOVER08N	70	WCS1000CV2	24
PA CVMM3	26	PA MG400	65	PXCOVER12N	70	WCS1000DV2	24
PA DBE01	7	PA MG500	65	RACKMQ16USB	35	WCS1000RXV2	24
PA DBE06	7	PA MIC62W	64	RK12N	73	XE35TB	48
PA DBE108	7	PA PR10PL	40	RK1L	72	XE35TW	49
PA DBE108E	7	PA PR10PLB	40	RK1NV	72	XE51CT	41
PA DBEVF	7	PA PR30PL	40	RK2L	72	XE55TB	48
PA DM250	9	PA RM4	31	RK2NV	72	XE55TW	49
PA DM550	9	PA RM88	22	RK2VP	73	XE65CT	42
PA DM750	9	PA SC1	44	RK3L	72	XE65TB	48
PA DMP88	22	PA SC2	44	RK4L	72	XE65TW	49
PA DWSKIT	25	PA SNBK	48	RK4N	73	XLR3FDL	83
PA EV MCL1Z	8	PA SNWH	49	RK6N	73	XLR3FVPRO	82
PA EV MCL2Z	8	PA SOURCEPRO	38	RK6VP	73	XLR3MDL	83
PA EV PROM5Z	8	PA STF1	70	RK8N	73	XLR3MVPRO	82
PA EV PROS8Z	8	PA STONE30	47	RK8VP	73		







# **PROEL**



## **PROEL SPA**

(Worldwide Headquarters)  
Via alla Ruenia, 37/43  
64027 Sant'Omero (TE) - ITALY  
Tel. +39 0861 81241  
Fax +39 0861 887862  
P.I. 00778590679  
N.Reg.AEE IT 08020000002762

## **UK**

Proel International Ltd.  
London

## **USA**

Proel North America Inc.  
Los Angeles

## **TUNISIE**

Proel Tunisia Sarl  
Tunisi

## **KOREA**

Proel Korea Co. Ltd.  
Gyunggi-Do

[info@proel.com](mailto:info@proel.com)  
[www.commercialaudio.proel.com](http://www.commercialaudio.proel.com)

