



**PROEL**   
**COMMERCIAL**  
**AUDIO**



**PROEL** 

# INDEX

EN54 Evacuation systems	<b>5</b>
Speakers for EN54 evac applications	<b>11</b>
Intercom	<b>19</b>
Audio systems	<b>21</b>
Conference systems	<b>25</b>
Portable systems	<b>29</b>
Amplifiers	<b>31</b>
Pre-amplifiers/Mixers and processors	<b>35</b>
Receivers and audio sources	<b>37</b>
Sound speakers	<b>39</b>
LNE Systems	<b>51</b>
Microphones	<b>53</b>
Rack and accessories	<b>57</b>
Volume controls	<b>63</b>
Line transformers	<b>65</b>



PROEL

DBE108E

VAE  
VOICE ALARM  
EQUIPMENT

LIVE EVAC

EVAC MESSAGE

ALERT MESSAGE

LIVE EVAC	EVAC Msg	ALERT Msg	STATUS
AE504-1-1 ZONE1	AE504-1-2 ZONE2	AE504-1-3 ZONE3	AE504-1-4 ZONE4
AE504-2-1 ZONE5	AE504-2-2 ZONE6	AE504-2-3 ZONE7	AE504-2-4 ZONE8
AE504-3-1 ZONE9	AE504-3-2 ZONE10	AE504-3-3 ZONE11	AE504-3-4 ZONE12

1 2 3 4  
5 6 7 8  
+ -



## EN54 EVACUATION SYSTEMS

# EN54 EVACUATION SYSTEMS



## AE604

Wall mounted All-In-One voice alarm system compliant with **EN54-16** with testing and charge circuit compliant with **EN54-4**.

4 Zones System on redundant loudspeaker line and back up Amplifier.

Main and backup amplifier in class D "Pure Path"<sup>™</sup>.

300W @ 100V on redundant loudspeaker line (A + B). The system does not require a line end resistor.

The system ensures full power performance even with backup power.

Processing circuit by DSP; balanced and isolated background music input, isolated and balanced background music microphone input with selectable 48Vdc phantom power supply and priority activation by contact; monitored input for remote emergency call stations; front panel fitted with monitor loudspeaker, monitored emergency PPT microphone, direct sending message keys, navigation keys, large display with LCD dot matrix. Line output for active sub-woofer; audio messages stored on uSD 16bit 48kHz: 8 general purpose messages with activation from dedicated input. contacts or incorporated scheduler, 8 monitored contacts for emergency announcement activation.

4 12Vdc batteries 18Ah not included.

Main Unit Dimensions (WxHxD): 470x550x235mm

Battery Case Dimensions (WxHxD): 470x220mmx200mm

Certification EN 54-16:2008 0051-CPR-1901



## AE300 (order code AE300R1)

Wall mounted All-In-One voice alarm system compliant with **EN54-16** with testing and charge circuit compliant with **EN54-4**.

Main and backup amplifier in class D "Pure Path"<sup>™</sup>

300W @ 100V on redundant loudspeaker line (A + B). The system does not require a line end resistor.

The system ensures full power performance even with backup power.

Processing circuit by DSP; balanced and isolated background music input, isolated microphone input with selectable 48Vdc phantom power supply and priority activation by contact; monitored input for remote emergency call stations; front panel fitted with monitor loudspeaker, monitored emergency PPT microphone, direct sending message keys, navigation keys, large display with LCD dot matrix.

Line output for active sub-woofer; audio messages stored on uSD 16 bit 48kHz: 8 general purpose messages with activation from dedicated input contacts or incorporated scheduler, 2 monitored contacts for emergency announcement activation.

4 12Vdc batteries. 7.2Ah not included

Dimensions (WxHxD): 440x495x155mm

Certification EN 54-16:2008 0051-CPR-0514



## PA DBE01

Fully monitored desk call station according to **EN54-16**. Software programmable "Talk" key, "Busy" and "System" LEDs, dynamic gooseneck microphone, automatic compressor, level adjustment trimmer Wiring by Rj45 connector and CAT5 Cable.



## PA DBE06

Fully monitored desk call station according to **EN54-16**. Software programmable capacitive selection keys, "Talk" and "Busy" Keys, "System" LEDs, dynamic gooseneck microphone, automatic compressor, level adjustment trimmer Wiring by Rj45 connector and CAT5 Cable. Wiring by Rj45 connector and CAT5 Cable. Power supply from RJ45 cable or 24Vdc local adaptor.



## PA DBE108

Fully monitored desk call station according to **EN54-16**. 10 keys dial keyboard, "Talk" and "Clear" key, 3 Evac activation keys, touch screen quarter VGA TFT display, dynamic gooseneck microphone, DSP audio processing. All keys and functions are software programmable. Wiring by Rj45 connector and CAT5 Cable. Power supply from RJ45 cable or 24Vdc local adaptor.



## PA DBE108E

Fully monitored Ethernet desk call station according to **EN54-16**. Connects to networkable Proel Evac System. 10 keys dial keyboard, "Talk" and "Clear" key, 3 Evac activation keys, touch screen quarter VGA TFT display, dynamic gooseneck microphone, DSP audio processing. All keys and functions are software programmable. Wiring by Rj45 connector and CAT5 Cable. Power supply from RJ45 cable or 24Vdc local adaptor.



## PA DBEVF

Fully monitored, wall-mount, red metal box, **EN54-16** Firemen's call station with handheld PTT Microphone. Fully software programmable, with status LEDs. Access to the security and fire alarm features system is granted by a key-lock. "EVAC" and "ALARM" Remote Message Activation Button. Wiring by Rj45 connector and CAT5 Cable. Power supply from RJ45 cable or 24Vdc local adaptor.

# EN54 EVACUATION SYSTEMS



## PA EV PROM5Z

Digital Master matrix certified **EN 54-16**  
 Up to 5 slots for direct plug-in modules for the Amplifier/line control.  
 Up to 108 zones (54 with dual-line architecture for zone A/B)  
 LCD display with navigation knobs for the complete unit control Led Power, Fault Warning and Voice Alarm  
 Front USB socket for PC interface purposes  
 24 Vdc power supply input  
 Spare amplifier input  
 Two RJ45 connectors for the Slave matrix connecting purposes  
 Two RJ45 connectors for the microphone units connecting (up to 108 microphone units)  
 Two contact activation messages and in/out programmable connectors  
 Common fault out  
 2 rack unit 19" Standard  
 Certification EN54-16:2008 0068-CPR-014

## PA EV PROS8Z

**EN54-16** certified slave matrix  
 Up to 8 directly insertable modules for amplifier/line control  
 Power LED  
 Fault Warning and Voice Alarm  
 24Vdc power supply input  
 Backup amplifier input  
 Four RJ45 connectors for connection to the Master matrix and subsequent Slave matrix  
 2 standard 19" rack units  
 Certification EN54-16:2008 0068-CPR-014



## PA EV MCL1Z

Zone module for amplifier/line control to be inserted in the Master EV PROM5Z or Slave EV PROS8Z matrix



## PA EV MCL2Z

Zone module for the control of the second line in the same zone amplifier, to be inserted in the Master EV PROM5Z or Slave EV PROS8Z matrix





## PA 48VDCER1

Back-up power supply control system.  
 Provides the back-up power supply to maintain the system in operation when there is no mains power supply.  
 48V input for external back-up batteries (not provided). Battery capacity 270 Ah- (Max total output 200A).  
 The built-in charger controls the power supply circuit when the AC supply operates correctly. In case of no mains power supply, all system devices will be automatically powered by the 48VDC batteries. The system controls the power supply circuit both for the mains power supply and for battery operation by communicating the power supply status and any faults to the unit.  
**EN54-4** certified system 230V/50Hz power supply



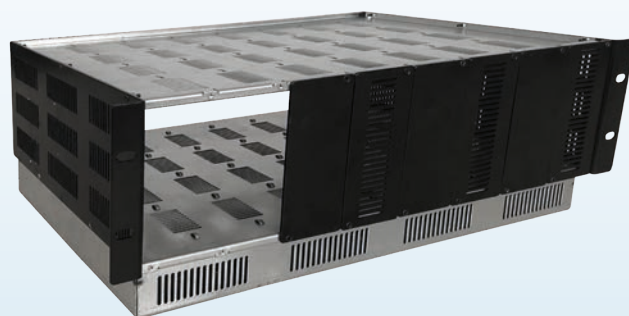
## PA MDAC8

8 units rack case (3U rack 19") for MDA series



## PA DM250/550/750

Modular Professional Power Unit: 70/100V: DM250 250W – DM550 550W – DM750 750W  
 Speaker short-circuit and overload protection circuit  
 Multi-Level Protection and Self Fault Recovery  
 Energy Saving Circuit  
 On Board DSP  
 LED indicators  
 Master Level control  
 Low and high tone adjustment  
 PA-HF Filter with rear switch  
 VOX threshold adjustment  
 MIC/Line input gain adjustment  
 Balanced Line Input on Euroblock terminal  
 Priority Mic/Line Balanced Input on RJ45 socket  
 Two selectable outputs at Constant voltage (70/100V) on Euroblock terminal  
 48Vdc emergency power supply  
 Dimensions (WxHxD): 116x53x367mm  
 Weight: 2.15Kg  
 Maximum 8 modules in a rack case MDA8C (3U rack 19")



## PA MDACTV

8 units rack ventilated case (3U rack 19") for MDA/DMPower series





## SPEAKERS FOR EN54 EVAC APPLICATIONS

# SPEAKERS FOR EN54 EVAC APPLICATIONS

## ARTIA SERIES



### PA A51TB - PA A51TW

System type: Wall Mount Speaker  
Drivers: 1" tweeter, 5" woofer  
Power Rating @ 8Ω (nominal): 50 W  
Rated Noise Power 100h: 50 W  
Power Rating @ 100V: 50 / 25 / 12.5 / 6.25 W  
Power Rating @ 70V: 50 / 25 / 12.5 / 6.25 / 3.12 W  
Impedance: 8 Ω (nominal)  
200 / 400 / 800 / 1.6K Ω @ 100V  
100 / 200 / 400 / 800 / 1.6K Ω @ 70V  
Connector: Ceramic Terminal Block  
Power Selection: Rotary Switch  
Frequency Response: (-10 dB) 90 - 20k Hz  
Sensitivity at 1W (1 kHz, 1m / 4m): 89 / 77 dB  
Max SPL (1 kHz, 1m / 4m): 106 / 94 dB  
Coverage Angle at 500 / 1k / 2k / 4k Hz(-6dB): 180° / 180° / 180° / 120°  
Cabinet: Black (RAL 9011)/White (RAL 9016)  
Material: ABS / Aluminium  
Environmental Type: B (IP55C)  
Operating Temperature: -25 ÷ +70 °C (-13 ÷ +158 °F)  
Relative Humidity: < 95%  
Dimensions (mm): 170 x 245 x 175 (W x H x D)  
Mounting: on wall using supplied bracket  
Weight (Kg): 2.3  
Standard Compliance: **EN54-24:2008**

PA A51TB: Black Color  
PA A51TW: White Color



### PA A31TB - PA A31TW

System type: Wall Mount Speaker  
Drivers: 1" tweeter, 3" woofer  
Power Rating @ 8Ω (nominal): 25W  
Rated Noise Power 100h: 25 W  
Power Rating @ 100V: 25 / 12.5 / 6.25 / 3.12 W  
Power Rating @ 70V: 25 / 12.5 / 6.25 / 3.12 / 1.56 W  
Impedance: 8 Ω (nominal)  
400 / 800 / 1.6K / 3.2K Ω @ 100V  
200 / 400 / 800 / 1.6K / 3.2K Ω @ 70V  
Connector: Ceramic Terminal Block  
Power Selection: Rotary Switch  
Frequency Response: (-10 dB) 120 - 20k Hz  
Sensitivity at 1W (1 kHz, 1m / 4m): 87 / 75 dB  
Max SPL (1 kHz, 1m / 4m): 101 / 89 dB  
Coverage Angle at 500 / 1k / 2k / 4k Hz(-6dB): 180° / 120° / 120° / 90°  
Cabinet: Black (RAL 9011)/White (RAL 9016)  
Material: ABS / Aluminium  
Environmental Type: B (IP55C)  
Operating Temperature: -25 ÷ +70 °C (-13 ÷ +158 °F)  
Relative Humidity: < 95%  
Dimensions (mm): 140 x 209 x 125 (W x H x D)  
Mounting: on wall using supplied bracket  
Weight (Kg): 1.74  
Standard Compliance: **EN54-24:2008**

PA A31TB: Black Color  
PA A31TW: White Color

# ARTIA SERIES



## PA AP50T

System type: Sound Projector  
Drivers: 5" dual cone full range  
Rated Noise Power 100h: 20 W  
Power Rating @ 100V: 20 / 10 / 5 W  
Power Rating @ 70V: 10 / 5 / 2.5 W  
Impedance: 500 / 1K / 2K  $\Omega$  @ 100V  
500 / 1K / 2K  $\Omega$  @ 70V  
Connector: Ceramic Terminal Block  
Power Selection: On terminal block  
Frequency Response: (-10 dB) 100 - 12k Hz  
Sensitivity at 1W (1 kHz, 1m / 4m): 90 / 78 dB  
Max SPL (1 kHz, 1m / 4m): 103 / 91 dB  
Coverage Angle at 500 / 1k / 2k / 4k Hz(-6dB): 180° / 120° / 80° / 60°  
Cabinet: White (RAL 9016)  
Material: Aluminium  
Environmental Type: B (IP55C)  
Operating Temperature: -25 ÷ +70 °C (-13 ÷ +158 °F)  
Relative Humidity: < 95%  
Dimensions (mm): 140 x 140 x 195 (W x H x D)  
Mounting: Brick/concrete on ceilings/wall  
Weight (Kg): 2.63  
Standard Compliance: **EN54-24:2008**



## PA AP52T

System type: Bi-Directional Sound Projector  
Drivers: 2x 5" full range  
Rated Noise Power 100h: 20 W  
Power Rating @ 100V: 20 / 10 / 5 W  
Power Rating @ 70V: 10 / 5 / 2.5 W  
Impedance: 500 / 1K / 2K  $\Omega$  @ 100V  
500 / 1K / 2K  $\Omega$  @ 70V  
Connector: Ceramic Terminal Block  
Power Selection: On terminal block  
Frequency Response: (-10 dB) 120 - 12k Hz  
Sensitivity at 1W (1 kHz, 1m / 4m): 88 / 76 dB  
Max SPL (1 kHz, 1m / 4m): 101 / 89 dB  
Coverage Angle at 500 / 1k / 2k / 4k Hz(-6dB): (2x) 180° / 120° / 80° / 60°  
Cabinet: White (RAL 9016)  
Material: Aluminium  
Environmental Type: B (IP55C)  
Operating Temperature: -25 ÷ +70 °C (-13 ÷ +158 °F)  
Relative Humidity: < 95%  
Dimensions (mm): 140 x 185 x 200 (W x H x D)  
Mounting: Brick/concrete on ceilings/wall  
Weight (kg): 3.45  
Standard Compliance: **EN54-24:2008**

# SPEAKERS FOR EN54 EVAC APPLICATIONS

## ARTIA SERIES



### PA AH50T

System type: Hanging Speaker  
Drivers: 5" dual cone full range  
Rated Noise Power 100h: 20 W  
Power Rating @ 100V: 20 / 10 / 5 W  
Power Rating @ 70V: 10 / 5 / 2.5 W  
Impedance: 500 / 1K / 2K  $\Omega$  @ 100V  
500 / 1K / 2K  $\Omega$  @ 70V  
Connector: Ceramic Terminal Block  
Power Selection: On terminal block  
Frequency Response: (-10 dB) 100 - 12k Hz  
Sensitivity at 1W (1 kHz, 1m / 4m): 90 / 78 dB  
Max SPL (1 kHz, 1m / 4m): 103 / 91 dB  
Coverage Angle at 500 / 1k / 2k / 4k Hz(-6dB): 180° / 120° / 80° / 60°  
Cabinet: White (RAL 9016)  
Material: Aluminium  
Environmental Type: B (IP55C)  
Operating Temperature: -25  $\div$  +70 °C (-13  $\div$  +158 °F)  
Relative Humidity: < 95%  
Dimensions (mm): 140 x 140 x 195 (W x H x D)  
Mounting: Suspended from ceilings  
Weight (kg): 2.77  
Standard Compliance: **EN54-24:2008**



### PA AIW50T

System type: In-Wall Speaker  
Drivers: 1" tweeter - 5" woofer  
Rated Noise Power 100h: 12 W  
Power Rating @ 100V: 12 / 6 / 3 W  
Power Rating @ 70V: 6 / 3 / 1.5 W  
Impedance: 850 / 1.7K / 3.4K  $\Omega$  @ 100V  
850 / 1.7K / 3.4K  $\Omega$  @ 70V  
Connector: Ceramic Terminal Block  
Power Selection: On terminal block  
Frequency Response: (-10 dB) 120 - 20k Hz (on wall)  
Sensitivity at 1W (1 kHz, 1m / 4m): 89 / 77 dB  
Max SPL (1 kHz, 1m / 4m): 100 / 88 dB  
Coverage Angle at 500 / 1k / 2k / 4k Hz(-6dB): 130° / 130° / 120° / 90°  
Cabinet: White (RAL 9016)  
Material: ABS / Aluminium  
Environmental Type: A (IP21C)  
Operating Temperature: -10  $\div$  +55 °C (+14  $\div$  +131 °F)  
Relative Humidity: < 95%  
Dimensions (mm): 280 x 192 x 77 (W x H x D)  
Mounting: In-wall or on surface with AIW50FRAME  
Weight (kg): 1.62  
Standard Compliance: **EN54-24:2008**



### PA AIW50FRAME

This optional accessory allows to install the AIW50T on the surface of concrete or brick walls.

# ARTIA SERIES



## PA AC61T

---

System type: Ceiling Speaker  
Drivers: 1" tweeter - 6" woofer  
Rated Noise Power 100h: 12 W  
Power Rating @ 100V: 12 / 6 / 3 W  
Power Rating @ 70V: 6 / 3 / 1.5 W  
Impedance: 850 / 1.7K / 3.4K  $\Omega$  @ 100V  
850 / 1.7K / 3.4K  $\Omega$  @ 70V  
Connector: Ceramic Terminal Block  
Power Selection: On terminal block  
Frequency Response: (-10 dB) 200 - 20k Hz (on wall)  
Sensitivity at 1W (1 kHz, 1m / 4m): 95 / 83 dB  
Max SPL (1 kHz, 1m / 4m): 105 / 93 dB  
Coverage Angle at 500 / 1k / 2k / 4k Hz(-6dB): 120° / 120° / 90° / 60°  
Cabinet: White (RAL 9016)  
Material: ABS / Aluminium  
Environmental Type: A (IP42C)  
Operating Temperature: -10 ÷ +55 °C (+14 ÷ +131 °F)  
Relative Humidity: < 95%  
Dimensions (mm): 186 x 114 (ø x D)  
Mounting: ø 166mm cut out  
Weight (kg): 1.07  
Standard Compliance: **EN54-24:2008**



## PA AC60T

---

System type: Ceiling Speaker  
Drivers: 6" dual cone full range  
Rated Noise Power 100h: 12 W  
Power Rating @ 100V: 12 / 6 / 3 W  
Power Rating @ 70V: 6 / 3 / 1.5 W  
Impedance: 850 / 1.7K / 3.4K  $\Omega$  @ 100V  
850 / 1.7K / 3.4K  $\Omega$  @ 70V  
Connector: Ceramic Terminal Block  
Power Selection: On terminal block  
Frequency Response: (-10 dB) 120 - 20k Hz (on wall)  
Sensitivity at 1W (1 kHz, 1m / 4m): 94 / 82 dB  
Max SPL (1 kHz, 1m / 4m): 104 / 92 dB  
Coverage Angle at 500 / 1k / 2k / 4k Hz(-6dB): 120° / 120° / 90° / 45°  
Cabinet: White (RAL 9016)  
Material: ABS / Aluminium  
Environmental Type: A (IP21C)  
Operating Temperature: -10 ÷ +55 °C (+14 ÷ +131 °F)  
Relative Humidity: < 95%  
Dimensions (mm): 186 x 74 (ø x D)  
Mounting: ø 166mm cut out  
Weight (kg): 0.81  
Standard Compliance: **EN54-24:2008**

# SPEAKERS FOR EN54 EVAC APPLICATIONS

## ARTIA SERIES



### PA ACO12T

NEW

System Type: Column Speaker  
Drivers: 1" tweeter - 12x2" woofer  
Rated Noise Power 100h: 40 W  
Power rating @ 100V: 40 / 20 / 10 W  
Power rating @ 70V: 20 / 10 / 5 W  
Impedance: 250 / 500 / 1K  $\Omega$  @ 100V  
250 / 500 / 1K  $\Omega$  @ 70V  
Connector: Ceramic Terminal block  
Power selection: On Terminal Block  
Frequency Response (-10 dB): 180 - 18k Hz  
Sensitivity at 1W (Pink, 1m / 4m): 87 / 75 dB  
Max SPL (Pink, 1m / 4m): 103 / 91 dB  
Coverage Angle at 500 / 1k / 2k / 4k Hz (-6dB):  
H 180° / 180° / 180° / 120°  
V 120° / 60° / 30° / 30°  
Cabinet: White (RAL 9016)  
Material: Aluminium  
Environmental Type: A (IP44C)  
Operating Temperature: -10 ÷ +55 °C (+14 ÷ +131 °F)  
Relative humidity: <95%  
Dimensions (mm): 78 x 828 x 66 (W x H x D)  
Mounting: on wall using supplied bracket  
Weight: 3.5 kg (7.71 lb)  
Standard Compliance: **EN54-24:2008**

### PA WS50EN

NEW

System Type: Wall / Ceiling Speaker  
Drivers: 5" woofer  
Rated Noise Power 100h: 6 W  
Power rating @ 100V: 6 / 3 / 1.5 / 0.75 W  
Power rating @ 70V: 6 / 3 / 1.5 / 0.75 / 0.375 W  
Impedance: 1.7K / 3.4K / 6.7K / 13K  $\Omega$  @ 100V  
850 / 1.7K / 3.4K / 6.7K / 13K  $\Omega$  @ 70V  
Connector: Ceramic Terminal Block  
Power selection: On Transformer Terminal  
Measure Environment: Free field on standard baffle  
Frequency Response (-10 dB): 170 - 10k Hz  
Sensitivity at 1W (1 kHz, 1m / 4m): 93 / 81 dB  
Sensitivity at 1W (Pink Noise 6dB Crest Factor, 1m / 4m): 90 / 78 dB  
Max SPL (Pink Noise 6dB Crest Factor, 1m / 4m): 97 / 85 dB  
Coverage Angle at 500 / 1k / 2k / 4k Hz (-6dB):  
Hor.: 130° / 120° / 100° / 70°  
Vert: 130° / 120° / 100° / 70°  
Cabinet: White (RAL 9016)  
Material: ABS / Aluminium  
Environmental Type: A  
Protection Degree: IP21C  
Operating Temperature: -10 ÷ +40 °C (+14 ÷ +104 °F)  
Relative humidity: < 95%  
Dimensions (mm): 265 x 165 x 77 (W x H x D)  
Mounting: Wall / Ceiling  
Weight: 0.96 kg (2.12 lb)  
Standard Compliance: **EN54-24:2008**



# ARTIA SERIES



## PA AHS30T

System Type: Horn Speaker  
Drivers: 1.4" compression driver  
Power Rating @ 8Ω (nominal): 30 W  
Rated Noise Power 100h: 30 W  
Power rating @ 100V: 30 / 15 / 7.5 / 3.75 W  
Power rating @ 70V: 30 / 15 / 7.5 / 3.75 / 1.9 W  
Impedance: 8 Ω  
333 / 666 / 1.33k / 2.67k Ω @ 100V  
163 / 333 / 666 / 1.33k / 2.67k Ω @ 70V  
Connector: Ceramic Terminal block  
Power selection: Rotary Switch  
Frequency Response (-10 dB): 290 - 11k Hz  
Sensitivity at 1W (Pink, 1m / 4m): 104 / 92 dB  
Max SPL (Pink, 1m / 4m): 119 / 107 dB  
Coverage Angle at 500 / 1k / 2k / 4k Hz (-6dB): 180° / 100° / 80° / 45°  
Cabinet: White (RAL 9016)  
Material: ABS  
Environmental Type: B (IP55C)  
Operating Temperature: -25 ÷ +70 °C (-13 ÷ +158 °F)  
Relative humidity: <95%  
Dimensions (mm): 285 x 280 x 205 (W x H x D)  
Mounting: on wall using supplied bracket  
Weight: 1.9 kg (4.18 lb)  
Certification: **EN54-24:2008**



## PA CS-6HT60BS

System Type: Horn Speaker  
LF Speaker: 6.5" Waterproof PP Woofer  
HF Speaker 1" Compression Driver  
Rated Noise Power 100h @ 100V: 60 W  
Rated Noise Power 100h @ 70V: 30 W  
Power rating @ 100V: 60 / 30 / 15 / 7.5 W  
Power rating @ 70V: 30 / 15 / 7.5 / 3.75 W  
Impedance: 167 / 333 / 666 / 1.33k Ω  
Connector: Ceramic Terminal block  
Power selection: On Transformer Terminals  
Measure Environment: Free Field  
Frequency Response (-10 dB): 200 - 20k Hz  
Sensitivity at 1W (1 kHz, 1m / 4m): 102 / 100 dB  
Sensitivity at 1W (Pink Noise 6dB Crest Factor, 1m / 4m): 99 / 87 dB  
Max SPL (Pink Noise 6dB Crest Factor, 1m / 4m): 114 / 102 dB  
Horizontal Coverage Angle at 500 / 1k / 2k / 4k Hz (-6dB): 105° / 50° / 80° / 80°  
Vertical Coverage Angle at 500 / 1k / 2k / 4k Hz (-6dB): 140° / 70° / 90° / 150°  
Cabinet: White (RAL 9016)  
Material: ABS  
Environmental Type: B  
Protection Degree: IP66  
Operating Temperature: -25 ÷ +55 °C (-13 ÷ +131 °F)  
Relative humidity: <95%  
Dimensions (mm): 418 x 332 x 391 (W x H x D)  
Mounting: on wall using supplied bracket  
Weight: 7.4 kg (16.3 lb)  
Standard Compliance: **EN54-24:2008**





**INTERCOMS**

# INTERCOMS



## INCOM2

---

Intercom System for glass counter

Inputs: 2 x MIC

Output: 1x LINE, 1x REC, 1x SPEAKER

Speakers: 2 x 1.5" 4 ohm 3W

Controls: 1 external speakers level – 1 internal speakers level

1 external mic gain – 1 internal mic gain

Frequency Response 300Hz – 10kHz (-3dB)

Power Supply: 12 Vdc 500 mA by Adapter Power Supply 100-240

V~ 50/60 Hz (supplied)

Dimensions (W x H x D): Main base: 110 x 41 x 135 mm

Mic Gooseneck: Ø 13 x 365 mm External unit: Ø 171 x 18 mm

Construction: ABS - Aluminium

Weight: 0.7 Kg (complete system)



## AUDIO SYSTEMS

# AUDIO SYSTEMS



## PA MATRIX88

- 8 Inputs 8 Outputs audio matrix
- 8 music inputs (4 lines and 4 Mic/line) freely selectable in each of the 8 outputs
- One local balanced input with gain control for each zone
- One main microphone with selectable priority
- 8 Alarm contacts
- One EM IN input for an external message generator with selectable priority function
- 8 RJ45 ports for CAT5 connection of 8 remote controls (one for each zone)
- 2 RJ45 ports for CAT5 connection of 2 paging consoles
- Separate level controls for each zone
- Display for viewing the selected input channel on each zone
- Internal speaker for zone listening
- 230/117V~ 50/60Hz power supply
- 24Vdc Emergency power supply
- RS485 Communication
- Up to 4 matrixes that can be connected in cascade (32-zone system)
- 19" standard 3U rack



## PA R88

Remote Control Panel for MATRIX88  
Allows for local volume adjustment and the selection of the sound source to be listened to.  
CAT5 connection to the MATRIX88 station.  
Provide local 24Vdc power supply for distances greater than 50 metres from the station.  
Wall recessed box included.  
Frequency response: 50Hz-18kHz  
Power consumption: 400mA  
Weight: 0.73Kg  
Dimensions (WxHxD): 86x86x33mm



## PA R88L

Remote Control Panel for MATRIX88 with Integrated mixer.  
Allows the local volume adjustment, selection of the sound source to listen to and local sound source input. It also allows you to insert a line input and a microphone input, both provided with level control, in the audio zone which it is assigned to.  
CAT5 connection to MATRIX88 station.  
Provide local 24Vdc power supply for distances greater than 50 metres from the station. Separate recessed box included.  
MIC Input Sensitivity: 10mV  
Aux Input Sensitivity: 335mV  
Aux Output: 775mV  
Frequency response: 50Hz-18kHz  
Power consumption: 400mA  
Weight: 0.153Kg  
Dimensions (WxHxD): 86x146x33mm



## PA LOC02

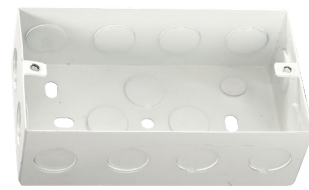
Remote wall panel, fitted with two XLR microphone inputs, which works in conjunction with the MATRIX88 central unit. It allows the two connected microphones to operate in the audio zone which the remote control is assigned to. You can silence the music programme coming from the central unit (MATRIX88) with the MUTE key and allow the playback of only the signal coming from the two microphone inputs. For each microphone input, the panel allows for the separate adjustment of volumes and tone levels. The connection between the panel and matrix is made using a UTP CAT5 cable, which is also used to power the panel by means of the matrix up to a distance of 50 metres; greater distances may require local additional power supply (+24Vdc). LOC02 has a dedicated recessed wall metal box.  
MIC Input Sensitivity: 10mV  
Frequency response: 50Hz-18kHz  
Signal-to-Noise Ratio: MIC  $\geq 65$  dB - BGM  $\geq 75$  dB  
Power consumption: 400mA  
Weight: 0.161Kg  
Dimensions (WxHxD): 86x146x33mm



## PA RBOX1

---

Metal box for wall mounting R88 module



## PA RBOX2

---

Metal box for wall mounting R88L and LOC2 modules



## PA BM8X8

---

Digital Microphone Base for MATRIX88 announcements  
SPL (1W/m): 4mV/Pa  
Frequency response: 150Hz-8kHz  
Power Supply: 24Vdc  
300 mm cardioid gooseneck  
Output connector: RJ45  
Dimensions (WxHxD): 232x61x131mm  
Weight: 0.95 kg



## PA EXBM8X8

---

Expansion unit for BM8X8 paging console. If you wish to expand a system to 16-24-32 zones, the BM8X8 call console must be fitted with 16-24-32 zone selection buttons for the paging operations. Note: The BM8X8 can be connected with a maximum of 3 EXBM8X8 modules, in cascade.

# AUDIO SYSTEMS



## PA ZONE8

8-Zone Voice/Music management system  
5 switched music inputs (Tape-CD-Tuner-AUX1-AUX2)  
Total level control of the call stations  
Music signal level control.  
ON/OFF controls to activate music on the zones  
LED light of zone occupied by the microphone call  
Priority input for emergency alert microphone.  
Command to activate two-tone siren according to DIN33404  
Line output for possible total recording of events.  
6 RJ45 inputs for CAT5 connection of the microphone stations  
(max 18 micro bases).  
Audio output on the 8 zones presettable at 100V or 0dB  
depending on the configuration used.  
24Vdc bypass command available for each zone for local volume  
attenuators.  
3 audio inputs with automatic activation (VOX) respectively for:  
automatic/additional free input telephone calls/messages.  
230 V~ - 24Vdc power supply for emergency.  
ZONE8 uses 3 operating configurations:

- A With unique amplifier - Call in the relevant zone/Music present in the zones only with system in stand-by.
- B With two amplifiers - Call in the relevant zone/Music always present even in the zones not concerned by the call.
- C With eight or more amplifiers - Call in the relevant zone/Music always present in the zones not concerned by the call. Large installation system.



## PA BM01

Digital Microphone Base for general announcements  
Makes the microphone call only in general mode. ALL key to engage the zones in general mode, TALK key to make the speakerphone announcements with the relative activation LED lights.



## PA BM04

Digital Microphone Base for 4-zone announcements  
Makes the microphone call on the individual zones or in general mode. ALL key to engage the zones in general mode, TALK key to make the speakerphone announcements with relative activation LED lights. Additional four/eight/sixteen keys to select the microphone call on as many zones. The zone activation is highlighted by its LED.





## CONFERENCE SYSTEMS

# CONFERENCE SYSTEMS



## PA DWSKIT

Wireless Discussion system composed of DWS receiving unit with four BMW wireless bases and battery charger.

Dual Display

Navigation keys

Level control of each individual microphone base

Infrared technology for setting the operating frequency

Mixed balanced and unbalanced output

Individual outputs for each channel

Channelled frequency mode or Tuning

Separate Squelch control for each individual Band

Wireless console with display and light ring to indicate the operational condition

Capacity: 50/60m

Metal case with 1 standard 19" rack unit

Two frequency ranges available: a: 610÷670 MHz



## PA CONF D

Conference and discussion system made in digital technology in compliance with IEC914 and ISO Standards.

Power supply and direct control of 64 microphone units

President base with priority

Three modes of operation of interventions: FREE MODE, LIMIT MODE and FIFO MODE

One MICRO and one LINE Input for external units

TAPE outputs for recording and LINE for room amplification (balanced and unbalanced)

Possibility of inserting an audio processor in the chain

Microphone SPL (1W/m) level control

Unit monitor loudspeaker level control

MALE-FEMALE 13m 8-Pin extension cable supplied



## PA BMCD

President microphone unit with "SPEAK" key, "PRIORITY" key and LED light of electret condenser microphone activated functions mounted on flexible stem with light ring, built-in monitoring loudspeaker with volume control, headphone jack. 2m Long Y-connector cable provided.

Base Dimensions (WxHxD): 235x54x110mm

Gooseneck length: 390mm

Weight: 1.15 kg



## PA BMDD

Delegate microphone unit with "SPEAK" key and LED light of electret condenser microphone activated functions mounted on flexible stem with light ring, built-in monitoring loudspeaker with volume control, headphone jack. 2m Long Y-connector cable provided.

Base Dimensions (WxHxD): 235x54x110mm

Gooseneck length: 390mm

Weight: 1.15 kg



## PA EXCONF D

---

Expansion unit for CONFID system. Each expansion unit can be connected with a maximum of 60 bases spread over 6 lines (never exceed 30 units per line). Using four expansion units, the system can control up to a maximum of 254.



## PA CVMF13

---

MALE-FEMALE 13 m 8-Pin extension cable



## PA CVMF6

---

MALE-FEMALE 6 m 8-Pin extension cable



## PA CVMF3

---

MALE-FEMALE 3 m 8-Pin extension cable



## PA CVMM3

---

MALE-MALE 3 m 8-Pin extension cable





## PORTABLE SYSTEMS

# PORTABLE SYSTEMS



## PA MEG30

---

Hand grip megaphone / ABS shoulder strap

Controls: Talk button, Volume, Siren/Alarm

Output: Power 30 W

Power Supply: 8 x 1.5V alkaline type C size batteries

External Power Supply: DC 12 V – 2 A

Battery Life: Approx. 15 hours

Audible Range: 0.8 – 2 km (depending on operating conditions)

Construction: ABS

Dimensions: Ø 230 x L 350 mm

Weight: 1.65 Kg (batteries not included)



# AMPLIFIERS

# AMPLIFIERS



## PA AMP35E

Compact amplifier: 35W, 4/ $\Omega$ -70/100V  
Speakers overload and short-circuit protection circuit • Led start-up indicator  
Main level control (Master)  
Separated Level Controls for 1÷2 and AUX inputs  
Bass and Treble tone adjustment  
2 MIC / MIC Phantom 48V / LINE inputs balanced on Euroblock terminals  
1 AUX Line RCA Input • MIC 1 Input with priority function  
4 outputs, two at constant impedance (8/4 $\Omega$ ) and two at constant voltage (70/100V)  
Power Supply 100-120V~ 50/60Hz (select 115V) or 220-240V~ 50/60Hz (select 230V)  
Weight 4.3 Kg



## PA AMP60E

Compact amplifier: 60W, 4/ $\Omega$ -70/100V  
Speakers overload and short-circuit protection circuit • Led start-up indicator  
Main level control (Master)  
Separated Level Controls for 1÷2 and AUX inputs  
Bass and Treble tone adjustment  
2 MIC / MIC Phantom 48V / LINE inputs balanced on Euroblock terminals  
1 AUX Line RCA Input • MIC 1 Input with priority function  
4 outputs, two at constant impedance (8/4 $\Omega$ ) and two at constant voltage (70/100V)  
Power Supply 100-120V~ 50/60Hz (select 115V) or 220-240V~ 50/60Hz (select 230V)  
Weight 5.3 Kg



## PA AMP160XL

Professional mixer amplifier 160W - 70/100V- 4 $\Omega$   
Speaker short-circuit and overload protection circuit  
LED power indicator  
LED level indicator  
Master volume control  
Separate level controls for inputs 1÷5  
Low and high tone adjustment  
Lit knobs  
4 MIC/MIC Phantom 24/LINE balanced inputs on Euroblock terminal  
3 AUX switchable inputs from front selector  
1÷4 Inputs with VOX priority function / Contact on other inputs (selectable by dip-switch)  
MAIN - IN/OUT function  
3 outputs, one of which at constant 4 $\Omega$  impedance and two at constant voltage (70/100V)  
Independent CHIME function for each input (routing)  
REC OUT output on RCA  
Balanced line level output on Euroblock terminal  
230/117V~ 50/60Hz autoswitch power supply  
Fins to fasten to a provided 1U 19" rack  
Dimensions (WxHxD): 439x44x300 mm  
483x44x300 mm - 1U 19" rack



## PA AMP03VR

Compact amplifier 30W, outputs 4/8/16 $\Omega$  - 100V  
MP3 file recorder/player module  
Two MIC inputs  
One PHONO/AUX input switchable by selector  
LED power indicator  
Master volume control  
Separate MIC 1 and MIC 2 microphone volume controls  
AUX volume control  
Low and high tone adjustment  
Screw for earth connection  
Four outputs, three of which at constant voltage (100V/70V/25V) and one at constant impedance (4W)  
MIC 1 input priority function  
Optional vehicle kit with amplifier fixing bracket and fused power cable  
Power supply: 230/117V~ 50-60Hz, 12Vdc  
Weight: 4.5 Kg





## PA ATMP240ZXL

4 Zone 240W Amplifier Mixer with Media Player  
 Zone paging function through dedicated PA RM4 microphone base (optional)  
 Overload and short circuit protection for each speaker outputs  
 LED power indicator  
 LED audio level indicator  
 Master level control  
 Separated Level Controls for 1÷4 zones and AUX inputs  
 Bass and Treble tone adjustment  
 Media Player equipped with remote control with FM radio tuner, MP3 player on SD / USB support and Bluetooth connection  
 N° 4 MIC / MIC Phantom 48V / LINE inputs balanced on Euroblock terminals.  
 N° 3 AUX inputs switchable by front selector/Inputs 1 ÷ 4 with independent priority function (VOX / Contact) on the other inputs selectable by dipswitch 1 ÷ 4  
 MAIN - IN/OUT Function  
 Main power output 4Ω / 70 / 100V on Euroblock terminal  
 N° 4 zone outputs at 100V on Euroblock terminal  
 N° 4 balanced line level zone outputs on Euroblock terminal  
 Independent CHIME function for each input (routing)  
 REC OUT on RCA  
 230/115 V~ 50 / 60 Hz power supply via voltage selector  
 19" 2U rack adapters included  
 Weight: 13.9Kg  
 Dimensions (WxHxD): 433x89x352mm  
 483x89x352mm – 2U rack 19"



## PA RM4

Paging Base for announcement on 4 zones, designed to be used with the ATMP240ZXL amplifier. It can make a microphone call on single zones, on a group of zones or on all zones.  
 ALL key for selecting all zones at the same time  
 Zone keys for selecting each single zone or groups of zones  
 TALK key for making the announcement  
 LED indicators  
 CHIME key to activate / deactivate the attention tone



## PA AUP160D

Professional power unit 160W - 70/100V- 4Ω  
 Speaker short-circuit and overload protection circuit  
 LED power indicator  
 LED level indicator  
 Master volume control  
 Low and high tone adjustment  
 Lit knobs  
 Balanced LINE input on Euroblock terminal  
 Balanced LINE output on Euroblock terminal  
 3 outputs, one of which at constant 4Ω impedance and two at constant voltage (70/100V)  
 230/117V~ 50/60Hz autoswitch power supply  
 Fins to fasten to a provided 1U 19" rack  
 Dimensions (WxHxD): 439x44x300mm  
 483x44x300mm - 1U 19" rack



## PA AUP4250S

4-channel power unit without transformers.  
 Power 4x250W. 4/8Ω 70/100V Outputs  
 4 constant impedance outputs (4Ω)  
 4 constant voltage outputs (70/100V) made electronically without the use of output transformers  
 One balanced input for each channel  
 One priority balanced input with independent level control for each channel  
 Independent master control for each channel.  
 Low and High tone control independent over the 4 channels  
 Rear insertion independent PA-HF filter for each channel  
 LED protection indicator  
 LED signal presence indicator  
 LED operating mode indicator (4 Ω/70V/100V)  
 Switching power supply in SMPS technology (switch mode power supply) Fins to fasten to a 19" 2U rack  
 Power Consumption: 2000VA  
 Power supply: 230V~ / 117V~ 50-60 Hz  
 Dimensions (WxHxD): 434x88.5x425mm – 19" 2U rack  
 Weight: 10.35 kg





## **PRE-AMPLIFIERS, MIXER AND PROCESSORS**

# PRE-AMPLIFIERS, MIXER AND PROCESSORS



## PA AMIX54Z

Stereo Matrix/Mixer with 5 line/micro inputs with addressable multimedia module (Tuner FM - MP3 reader)  
Five mic/line inputs on balanced COMBO and RCA Stereo  
Independent gain control over input channels 1~5 by means of a rear trimmer  
Phantom +48V that can be deselected for each input  
LED CLIP indicator for each channel input  
INPUT1 priority function over the other inputs that can be disabled  
Dip-switch (INPUT1~5) to assign the input to the outputs  
Independent volume controls (INPUT1~5)  
Four balanced stereo zones/outputs on Euroblock terminals  
Four signal presence indicators on the outputs  
Stereo/Mono selector on each output  
Independent volume controls for the four zone outputs  
MP3 multimedia player with FM radio freely addressable on the output zones  
Ground Lift  
Power supply selector 230/117V~ 50/60Hz  
Dimensions (WxHxD): 483x44.4x200mm - 19" 1U rack  
Weight: 3.4 kg



## PA AMIX63

Analogue mixer to mix microphone/line signals, 6 Micro XLR inputs, 3 RCA Line inputs  
High-quality design and manufacturing accuracy  
Six balanced COMBO mic/line inputs  
Three unbalanced RCA stereo line inputs  
Line/mic with phantom/mic input type selectors  
LED input signal indicators for each channel  
Adjustable MIC 1 priority function on the other inputs  
Independent gain controls for channels 1~9  
Two balanced XLR outputs (Left and Right)  
Balanced mono output  
RCA type stereo REC output (Left and Right)  
LED output signal level indicators (Left and Right)  
MASTER volume control  
Tone controls  
Emergency power terminals (24 V DC)  
Power supply selector 230V~ 50/60Hz (AMIX63V117 117V~ 50/60Hz)  
Dimensions (WxHxD): 483x44x195mm 19" 1U rack  
Weight: 2.9 kg

## PA FSHIFTER

Antilarsen processor  
Balanced line input on XLR connector  
Unbalanced line input on RCA connector  
Balanced line output on XLR connector  
Unbalanced line output on RCA connector  
LED indication of operating mode  
Switch power supply 117/230V~ 50/60Hz  
Dimensions (WxHxD): 483x44x195mm - 19" 1U Rack  
Weight: 32 kg



## AUDIO SOURCE AND RECEIVERS

# AUDIO SOURCES AND RECEIVERS



## PA SOURCEPRO

NEW

COMBINED AUDIO SOURCE  
USB/SD Card Reader with Bluetooth  
FM RDS / DAB Tuner function  
AUTO PLAY Function  
Controls: MP3 PLAYER CONTROLS  
RADIO TUNER CONTROLS  
Power Supply: 230-117V~ 50/60Hz  
RS232  
Dimensions (WxHxD): 482.8x44x179mm - 1U rack 19"  
Weight: 2.5kg



## PA STRWIFI



### High-end audio streaming receiver with network and Bluetooth connectivity

Streaming music via ETHERNET network (WIFI and WIRED) with no distance limitation or thru BLUETOOTH 5.0 up to 15 meters.  
High quality music streaming with sample rate decoding up to 192kHz, 24bit.  
Supports streaming source from online services, smart device memory, USB pen drive, NAS, BLUETOOTH and line in.  
Spotify, Airplay, Qplay, DLNA, UPnP streaming protocols supported, 3rd party app compatible.  
Multiroom and multizone streaming enabled by multiple units connected in the same network.  
Free iOS and Android app available with global online update for new features.  
Spotify, Deezer, Tidal, Qobuz, iHeartRadio, TuneIn, Napster online streaming services integrated to use in the app.  
PC streaming from iTunes.  
Analogue and Digital input for connecting external audio devices.  
EQ adjustment via app.  
Preset playlist available for quick access

## PA ATMP160XL

Combo receiver 160W - 70/100V- 4Ω  
USB/SD MMC, BLUETOOTH integrated multimedia module and Digital AM/FM tuner  
Speaker short-circuit and overload protection circuit  
LED power indicator  
LED level indicator  
Master volume control  
Separate level controls for inputs 1÷5  
Low and high tone adjustment  
Lit knobs  
4 MIC/MIC Phantom 24/LINE balanced inputs on Euroblock terminal  
3 AUX switchable inputs from front selector  
1÷4 Inputs with VOX priority function / Contact on other inputs (selectable by dip-switch)  
MAIN - IN/OUT function  
3 outputs, one of which at constant 4Ω impedance and two at constant voltage (70/100V)  
Independent CHIME function for each input (routing)  
REC OUT output on RCA  
Balanced line level output on Euroblock terminal  
230/117V~ 50/60Hz autoswitch power supply  
Fins to fasten to a provided 19" 2U rack  
Dimensions (WxHxD): 439x88x300mm  
483x88 x300mm - 19" 2U rack



## SOUND SPEAKERS

# SOUND SPEAKERS



## PA PR10PL

ABS sound projector  
Loudspeaker: Full range  
Power: 10/5/2.5W @ 100V  
Frequency response: 160Hz-16kHz (-10dB)  
SPL (1W/m): 91dB  
SPL MAX (Pmax @ 1m): 101dB  
Coverage angle 1kHz/4kHz (-6dB): 130°/85°  
Colour: White (RAL 9010)  
Dimensions: Ø138-H190mm  
Weight: 1.9 kg  
U-type bracket included  
Protection rating: IP55



## PA PR10PLB

ABS sound projector  
Loudspeaker: Full range  
Power: 10/5/2.5W @ 100V  
Frequency response: 160Hz-16kHz (-10dB)  
SPL (1W/m): 91dB  
SPL MAX (Pmax @ 1m): 101dB  
Coverage angle 1kHz/4kHz (-6dB): 130°/85°  
Colour: Black  
Dimensions: Ø138-H190mm  
Weight: 1.9 kg  
U-type bracket included  
Protection rating: IP55



## PA PR30PL

ABS waterproof sound projector  
Loudspeaker: 5" Full range  
Power: 30/15/7.5/3.5/1.5W @ 100V 8Ω  
Frequency response: 125Hz-15kHz  
SPL (1W/m): 101dB  
SPL MAX (Pmax @ 1m): 110 dB  
Coverage angle 1kHz/4kHz (-6dB): 130°/90°  
Colour: White  
Dimensions: Ø178-H200mm  
Weight: 2.1 kg  
U-type bracket included  
Protection rating: IP56



## PA HSPL30

Music-type ABS waterproof wide-band Hi-Fi horn  
Loudspeaker: Full range  
Power: 30/15W @ 100V  
Frequency response: 120Hz-15kHz (-10dB)  
SPL (1W/m): 98dB  
SPL MAX (Pmax @ 1m): 113dB  
Coverage angle 1kHz/4kHz (-6dB):  
H: 110°/80°  
V: 90°/80°  
Dimensions (WxHxD): 366x172x272mm  
U type bracket included  
Protection rating: IP56





## PA WS04

ABS wall speaker  
 Loudspeaker: 6" Full range  
 Power: 10/5W @ 100V  
 Frequency response: 110Hz-13kHz (-10dB)  
 SPL (1W/m): 91dB  
 SPL MAX (Pmax @ 1m): 101dB  
 Coverage angle 1kHz/4kHz (-6dB): 110°/85°  
 Colour: White (RAL 9010)  
 Dimensions (WxHxD): 240x345x101mm  
 Weight: 1.6 kg  
 Fixing system by screw



## PA CS602WIFI

Stereo system consisting of two premium 2-way 6.5" ceiling speakers, one active and one passive.  
 6.5" Kevlar low frequency driver with rubber suspension.  
 1" pivoting aluminum dome tweeter with EOS waveguide design.  
 LF amplifier 50W @4ohm x2, HF amplifier 15W @8ohm x2.  
 Streaming music via ETHERNET network (WIFI and WIRED) with no distance limitation or thru BLUETOOTH 5.0 up to 15 meters.  
 High quality music streaming with sample rate decoding up to 192kHz, 24bit.  
 Supports streaming source from online services, smart device memory, NAS, BLUETOOTH and line in.  
 Spotify, Airplay, Qplay, DLNA, UPnP streaming protocols supported, 3rd party app compatible.  
 Multiroom and multizone streaming enabled by multiple units connected in the same network.  
 Free iOS and Android app available with global online update for new features.  
 Spotify, Deezer, Tidal, Qobuz, iHeartRadio, TuneIn, Napster online streaming services integrated to use in the app.  
 PC streaming from iTunes.  
 Analogue input for connecting external audio devices.  
 EQ adjustment via app.



## XE51CTX

Ceiling Speaker  
 Drivers: 5" woofer - 1" tweeter  
 Rated Noise Power 100h: 30 W  
 Power rating @ 100V: 30 / 15 / 7.5 W  
 Power rating @ 70V: 15 / 7.5 / 3.75 W  
 Impedance: 333 / 667 / 1332 Ω @ 100V  
                   333 / 667 / 1332 Ω @ 70V  
 Power selection: On Wires  
 Frequency Response (-10 dB): 90 - 20k Hz  
 Sensitivity at 1W (1 kHz, 1m / 4m): 89 / 77 dB  
 Sensitivity at 1W (Pink Noise 6dB Crest Factor, 1m / 4m): 86 / 74 dB  
 Max SPL (Pink Noise 6dB Crest Factor, 1m / 4m): 103 / 91 dB  
 Coverage Angle at 500 / 1k / 2k / 4k Hz (-6dB):  
 Hor.: 130° / 120° / 100° / 70°  
 Vert: 130° / 120° / 100° / 70°  
 Cabinet: White (RAL 9016)  
 Material: ABS / Iron  
 Environmental Type: A  
 Protection Degree: IP21C  
 Operating Temperature: -10 ÷ +40 °C (+14 ÷ +104 °F)  
 Relative humidity: < 95%  
 Dimensions (mm): 220 x 220 x 95 (W x L x D)  
 Mounting: Ceiling (190x190 mm / 7.5x7.5" hole)  
 Weight: 1.7 kg (3.75 lb)



# SOUND SPEAKERS



## XE51CT

ABS ceiling recessed speaker  
Loudspeaker: 5" Full range  
Power: 10/5/2.5W @ 100V  
Frequency response: 100Hz-20kHz (-10dB)  
SPL (1W/m): 90dB  
SPL MAX (Pmax @ 1m): 100 dB  
Coverage angle 1kHz/4kHz (-6dB): 130°/100°  
Colour: White (RAL 9010)  
Dimensions (WxHxD): Ø191.5-H78mm  
Weight: 1 kg  
Assembly: ceiling recessed  
Mounting hole: Ø165mm  
Available in pairs (single price)



## PA COVERCS

Metal box for XE51CT



## PA CSE06T

Metal ceiling speaker  
Loudspeaker: 5" Full range  
Power: 6/3W @ 100V  
Frequency response: 110Hz-15kHz (-10dB)  
SPL (1W/m): 90dB  
SPL MAX (Pmax @ 1m): 98dB  
Coverage angle 1kHz/4kHz (-6dB): 150°/95°  
Colour: White (RAL 9010)  
Dimensions: Ø204-H85mm  
Weight: 0.7 kg  
Assembly: ceiling recessed  
Mounting hole: Ø175mm



## XE65CT

ABS 2-way hi-fi ceiling recessed speaker  
Loudspeaker: W: 6.5" - T: 1"  
Power: 20/10/5/2.5W @ 100V  
Frequency response: 70Hz-20kHz (-10dB)  
SPL (1W/m): 87dB  
SPL MAX (Pmax @ 1m): 100 dB  
Coverage angle 1kHz/4kHz (-6dB): 130°/80°  
Colour: White (RAL 9010)  
Dimensions: Ø204-H85mm  
Weight: 1.2 kg  
Assembly: ceiling recessed  
Mounting hole: Ø179mm  
Available in pairs (single price)



## PA CS30HSL

ABS two-way hi-fi ceiling recessed speaker and magnetic metal grid.  
 Loudspeaker: W: 6" T: 3/4"  
 Power taps: 30/15/7.5W @ 100V  
 Frequency response: 60Hz -20KHz  
 SPL(1W/m): 89 dB  
 SPL MAX (Pmax @ 1m): 105 dB  
 Coverage Angle 1KHz/4KHz (-6dB):130°/120°  
 Construction materials ABS/Iron  
 Colour: White (RAL 9010)  
 Dimensions: (Ø x D) 232 x 90 mm  
 Weight:1.85Kg  
 Recess Hole: 210mm



## PA CS81HF

Ceiling Speaker  
 Drivers: 8" woofer - 1" tweeter  
 Power Rating @ 8 Ω (nominal): 40 W  
 Rated Noise Power 100h: 40 W  
 Power rating @ 100V: 40 / 20 / 10 / 5 W  
 Power rating @ 70V: 40 / 20 / 10 / 5 / 2.5 W  
 Impedance: 8 Ω (nominal): 250 / 500 / 1K / 2K Ω @ 100V  
 125 / 250 / 500 / 1K / 2K Ω @ 70V  
 Connector: Wire Push Terminal Block  
 Power selection: Rotary Switch  
 Frequency Response (-10 dB): 80 - 22k Hz  
 Sensitivity at 1W (1 kHz, 1m / 4m): 90 / 78 dB  
 Sensitivity at 1W (Pink Noise 6dB Crest Factor, 1m / 4m): 87 / 75 dB  
 Max SPL (Pink Noise 6dB Crest Factor, 1m / 4m): 105 / 93 dB  
 Coverage Angle at 500 / 1k / 2k / 4k Hz (-6dB):  
 Hor.: 130° / 120° / 100° / 70°  
 Vert: 130° / 120° / 100° / 70°  
 Cabinet: White (RAL 9016)  
 Material: ABS / Iron  
 Environmental Type: A  
 Protection Degree: IP21C  
 Operating Temperature: -10 ÷ +40 °C (+14 ÷ +104 °F)  
 Relative humidity: < 95%  
 Dimensions (mm): 280 x 190 (Φ x H)  
 Mounting: Ceiling (250 mm / 9.8" hole)  
 Weight: 2.8 kg (6.17 lb)



## PA CSB10

ABS Ceiling speaker  
 Loudspeaker: 5" Full range  
 Power: 10/5/2.5W @ 100V-70V  
 Frequency response: 110Hz - 15kHz (-10 dB)  
 SPL (1W/m): 92dB  
 SPL MAX (Pmax @ 1m): 102dB  
 Coverage angle 1kHz/4kHz (-6dB): 160°/95°  
 Colour: White (RAL 9010)  
 Dimensions (WxHxD): Ø184-H162.5mm  
 Weight: 1.7 kg  
 4.5 metre suspension cable  
 Protection rating: IP44

# SOUND SPEAKERS



## PA CO30S5

Aluminium high directivity column speaker  
Loudspeaker: 5x3" ¼  
Power: 7.5/15/30 W - 100V  
Frequency response: 200Hz-19kHz (-10dB)  
SPL (1W/m): 93dB  
SPL MAX (Pmax @ 1m): 108dB  
Coverage angle 1kHz/4kHz (-6dB): V:70°/20° H:160°/120°  
Colour: White  
Dimensions (WxHxD): 91x544x88mm  
Weight: 3.5 kg



## PA CO60S10

Aluminium high directivity column speaker  
Loudspeaker: 10x3" ¼  
Power: 15/30/60 W @ 100V  
Frequency response: 180Hz-18kHz (-10dB)  
SPL (1W/m): 93dB  
SPL MAX (Pmax @ 1m): 111dB  
Coverage angle 1kHz/4kHz (-6dB): V:40°/20° H:160°/120°  
Colour: White  
Dimensions (WxHxD): 91x94 x88mm  
Weight: 6.2 kg



## PA CO120S15

Aluminium high directivity column speaker  
Loudspeaker: 10x3" ¼  
Power: 60/120W  
@ 100V Frequency response 170Hz-17kHz (-10dB)  
SPL (1W/m): 94dB  
SPL MAX (Pmax @ 1m): 115dB  
Coverage angle 1kHz/4kHz (-6dB): V:30°/20° H:160°/120°  
Colour: White  
Dimensions (WxHxD): 91x1339x88mm  
Weight: 8.9 kg



## PA SC1

Wall bracket for CO series column speakers



## PA SC2

Wall bracket for CO series column speakers



## PA CO4006

---

Aluminium high directivity column speaker  
Loudspeaker: W: 6x2" - T: 1"  
Power: 40/20/10W @ 100V  
Frequency response: 180Hz-18kHz (-10dB)  
SPL (1W/m): 91dB  
SPL MAX (Pmax @ 1m): 107 dB  
Coverage angle 1kHz/4kHz (-6dB): V:40°/30° H:170°/140°  
Colour: White  
Swivel bracket  
Dimensions (WxHxD): 67x505x65mm  
Weight: 2.2 kg



## PA CO4012

---

Aluminium high directivity column speaker  
Loudspeaker: W:12x2" - T: 1"  
Power: 40/20/10W @ 100V  
Frequency response: 180Hz-18kHz (-10dB)  
SPL (1W/m): 93dB  
SPL MAX (Pmax @ 1m): 109 dB  
Coverage angle 1kHz/4kHz (-6dB): V:30°/25° H:170°/150°  
Colour: White  
Swivel bracket  
Dimensions (WxHxD): 67x828x65mm  
Weight: 3.5 kg



# SOUND SPEAKERS



## PA HS15AL

Aluminium horn speaker  
Power: 15/10/5/3/1W @ 100V  
Frequency response: 280Hz-12.5kHz (-10dB)  
SPL (1W/m): 108dB  
SPL MAX (Pmax @ 1m): 120dB  
Coverage angle 1kHz/4kHz (-6dB): 90°/60°  
Colour: Grey  
Dimensions: Ø212.5x229.5mm  
Weight: 1.4 kg  
U-type bracket included  
Protection rating: IP55



## PA HS30AL

Aluminium horn speaker  
Power: 30/15/10/5/3/1W @ 100V  
Frequency response: 250Hz-16kHz (-10dB)  
SPL (1W/m): 109dB  
SPL MAX (Pmax @ 1m): 124dB  
Coverage angle 1kHz/4kHz (-6dB): 90°/60°  
Colour: Grey  
Dimensions: Ø259x261mm  
Weight: 1.8 kg  
U-type bracket included  
Protection rating: IP55



## PA H16R

Long range aluminium round horn, without driver Anti UV treatment  
To be used combined with HD60T driver  
Coverage angle 1kHz/4kHz (-6dB): 80°/65°  
Aluminium body  
Colour: Grey  
Dimensions: Ø407x325mm  
Weight: 1.5 kg  
U-type bracket included  
Protection rating: IP66



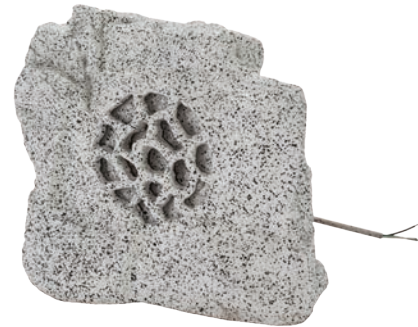
## PA HD60T

Waterproof driver unit for "H" series horns  
Power: 60/40/20W @ 100V  
Frequency response: 200Hz-6kHz (-10dB)  
SPL (1W/m): 115dB  
SPL MAX (Pmax @ 1m): 133dB  
Colour: Grey  
Weight: 1.4 kg  
Protection rating: IP55



## PA HS30

ABS horn speaker  
 Power: 30/15/10/5/3/1W @ 100V  
 Frequency response: 250Hz-16kHz (-10dB)  
 SPL (1W/m): 109dB  
 SPL MAX (Pmax @ 1m): 124dB  
 Coverage angle 1kHz/4kHz (-6dB): 95°/65°  
 Colour: White (RAL 9010)  
 Dimensions (WxHxD): 287x208x257.5mm  
 Weight: 1.7 kg  
 U-type bracket included  
 Protection rating: IP55



## PA STONE

Stone-shape speaker  
 Loudspeaker: Two-way coaxial W:6.5" - T:1.5"  
 Power: 15/7.5W @ 100V - 7.5/3.8W @ 70V  
 Frequency response: 120Hz -15kHz (-10dB)  
 SPL (1W/m): 95dB  
 SPL MAX (Pmax @ 1m): 108dB  
 Coverage angle 1kHz/4kHz (-6dB): 250°/250°  
 ABS body  
 Colour: Light grey stone  
 Dimensions (WxHxD): 259x265x349mm  
 Weight: 4.3 kg  
 Protection rating: IP 55



NEW

## PA GS62

Outdoor Speaker  
 Drivers: 6" woofer - 0.75" tweeter  
 Rated Noise Power 100h: 30 W  
 Power rating @ 100V: 30 / 15 W  
 Power rating @ 70V: 15 / 7.5 / W  
 Impedance: 333 / 667 Ω @ 100V  
 333 / 667 Ω @ 70V  
 Power selection: On Wires  
 Frequency Response (-10 dB): 95 - 13k Hz  
 Sensitivity at 1W (1 kHz, 1m / 4m): 82 / 70 dB  
 Sensitivity at 1W (Pink Noise 6dB Crest Factor, 1m / 4m): 79 / 67 dB  
 Max SPL (Pink Noise 6dB Crest Factor, 1m / 4m): 96 / 84 dB  
 Coverage Angle: Hor.: 360° - Vert: 180°  
 Cabinet: Dark Brown (RAL 8022)  
 Material: Glass Fiber Reinforced Plastic / Aluminium  
 Environmental Type: B  
 Protection Degree: IP56C  
 Operating Temperature: -25 ÷ +70 °C (-13 ÷ +158 °F)  
 Relative humidity: < 100%  
 Dimensions (mm): 270 x 320 (Φ x H)  
 Mounting: Garden Ground Floor  
 Weight: 5.4 kg (11.9 lb)



## PA FGS20

Hi-Fi garden speaker  
 Loudspeaker: Two-way coaxial  
 Power: 30/15/7.5W @ 100V  
 Frequency response: 80Hz-12kHz (-10dB)  
 SPL (1W/m): 97dB  
 SPL MAX (Pmax @ 1m): 110dB  
 Coverage angle 1kHz/4kHz (-6dB): 360°/360°  
 ABS body  
 Colour: Green  
 Dimensions (WxHxD): 280x400x280mm  
 Weight: 1.8 kg  
 Protection rating: IP55

# SOUND SPEAKERS



## XE35TB

Two-way monitor speaker

Loudspeaker: W: 3.5" T: 1"

Power: 15/7.5/4/2/1W @ 100/70V  
30W @ 8Ω

Frequency response: 70Hz-20kHz (-10dB)

SPL (1W/m): 85 dB

SPL MAX (Pmax @ 1m): 97 dB

Coverage angle 1kHz/4kHz (-6dB): 150°/100°

ABS body

Colour: Black

Dimensions (WxHxD): 130x198x130mm

Weight: 1.8 kg

U-type bracket included

Available in pairs (single price)



## XE55TB

Two-way monitor speaker

Loudspeaker: W: 5" - T: 1"

Power: 30/10/5/2/1W @ 100/70V  
60W @ 8Ω

Frequency response: 70Hz-20kHz (-10dB)

SPL (1W/m): 87dB

SPL MAX (Pmax @ 1m): 101dB

Coverage angle 1kHz/4kHz (-6dB): 140°/90°

ABS body

Colour: Black

Dimensions (WxHxD): 181x240x172mm

Weight: 3 kg

U-type bracket included

Available in pairs (single price)



## XE65TB

Two-way monitor speaker

Loudspeaker: W: 6.5" - T: 1"

Power: 40/20/10/5/2W @ 100/70V  
60W @ 8Ω

Frequency response: 70Hz-20kHz (-10dB)

SPL (1W/m): 87dB

SPL MAX (Pmax @ 1m): 103dB

Coverage angle 1kHz/4kHz (-6dB): 140°/90°

ABS body

Colour: Black

Dimensions (WxHxD): 217x288x204mm

Weight: 4.2 kg

U-type bracket included

Available in pairs (single price)



## PA SNBK

Adjustable wall swivel connection for Monitor line.

Colour Black. Standard package: 2pcs





## XE35TW

Two-way monitor speaker

Loudspeaker: W: 3.5" - T: 1"

Power: 15/7.5/4/2/1W @ 100/70V  
30W @ 8Ω

Frequency response: 70Hz-20kHz (-10dB)

SPL (1W/m): 85dB

SPL MAX (Pmax @ 1m): 97 dB

Coverage angle 1kHz/4kHz (-6dB): 150°/100°

ABS body

Colour: White

Dimensions (WxHxD): 130x198x130mm

Weight: 1.8 kg

U-type bracket included

Available in pairs (single price)



## XE55TW

Two-way monitor speaker

Loudspeaker: W: 5" - T: 1"

Power: 30/10/5/2/1W @ 100/70V  
60W @ 8Ω

Frequency response: 70Hz-20kHz (-10dB)

SPL (1W/m): 87dB

SPL MAX (Pmax @ 1m): 101dB

Coverage angle 1kHz/4kHz (-6dB): 140°/90°

ABS body

Colour: White

Dimensions (WxHxD): 181x240x172mm

Weight: 3 kg

U-type bracket included

Available in pairs (single price)



## XE65TW

Two-way monitor speaker

Loudspeaker: W: 6.5" - T: 1"

Power: 40/20/10/5/2W @ 100/70V  
60W @ 8Ω

Frequency response: 70Hz-20kHz (-10dB)

SPL (1W/m): 87dB

SPL MAX (Pmax @ 1m): 103dB

Coverage angle 1kHz/4kHz (-6dB): 140°/90°

ABS body

Colour: White

Dimensions (WxHxD): 217x288x204mm

Weight: 4.2 kg

U-type bracket included

Available in pairs (single price)



## PA SNWH

Adjustable wall swivel connection for Monitor line.

Colour White. Standard package: 2pcs





**LNE SYSTEMS**

# LNE SYSTEMS



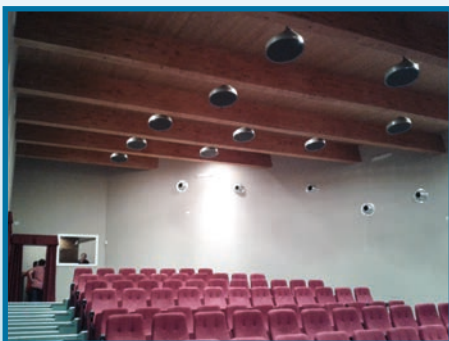
## DS112P

LNE SYSTEM Low Noise Emission  
Two-way high directivity System MTM circular configuration  
Input power rating (continuous): 300W (8 $\Omega$ )  
Input power rating (peak): 600W (8 $\Omega$ )  
Impedance: 8 $\Omega$   
Frequency response: 110Hz-16kHz (-3dB), 80Hz-18kHz (-10dB)  
SPL MAX (Pmax @ 1m): 124dB  
Low frequencies: 12 x 3.5"  
High frequencies: 1 x 1" compression driver  
Coverage angle: <78°  
Colour: Standard RAL 9007  
Colour Custom: (RAL CODE) Minimum 20 pcs  
Weight: 9 kg  
Dimensions: Ø510-H208mm  
Protection rating: IP55

## DS112PLF

Low frequency extension for DS112P  
Input power rating (continuous): 300W (8 $\Omega$ )  
Input power rating (peak): 600W (8 $\Omega$ )  
Impedance: 8 $\Omega$   
Frequency response: 75Hz - 180Hz (-3dB) processed  
SPL MAX (Pmax @ 1m): 126dB  
Low frequencies: 12 x 3.5"  
Coverage angle: <78°  
Colour: Standard RAL 9007  
Colour Custom: (RAL CODE) Minimum 20 pcs  
Weight: 9,4 kg  
Dimensions: Ø510-H208mm  
Protection rating: IP55

NEW





# MICROPHONES

# MICROPHONES



## PA BM101

General announcement active call station with automatic compressor, dynamic microphone, programmable talk button (PTT or ON/OFF), level output adjustment trimmer, chime level trimmer, selectable 2 or 3 tone chime and smart priority management. Power supply from RJ45 cable or 24Vdc local adaptor.



## PA BM102

General announcement call station with dynamic microphone, Push to talk button and priority output contact (Normally Open).



## PA BMG2

Table microphone base, with gooseneck microphone with light ring  
Sensitivity:  $-40\text{dB} \pm 2\text{dB} / 100\Omega \pm 30\%$   
Frequency response: 40Hz-20kHz (-3dB)  
Power supply: Phantom 48Vdc Batteries 3V (2x AA)  
Gooseneck length: 445 mm  
Switch: ON-OFF  
Connector: XLR  
Dimensions (WxHxD): 115x140x30mm  
Weight: 0.7 kg



## PA MIC62W

Boundary condenser microphone  
table or wall low profile  
Condenser capsule  
One-way  
Frequency response: 60Hz-16kHz  
Sensitivity:  $-36 \pm 3\text{dB} @ 1\text{kHz}$   
Impedance:  $200\Omega \pm 30\% - @ 1\text{kHz}$   
Voltage: 9V~52Vdc  
Cable length: 4.56m  
Weight: 0.250Kg (without cable)  
Dimensions (WxHxD): 75x20x100mm  
Colour: White



## PA MG400

---

One-way electret gooseneck microphone  
Sensitivity: 7mV/Pa  
Impedance: 200Ω balanced  
Frequency response: 150Hz-18kHz (-3dB)  
Phantom power supply: 12-52Vdc  
Gooseneck length: 400mm  
Connector: XLR  
Dimensions: H400mm



## PA MG500

---

One-way, electret gooseneck microphone  
Sensitivity: 7mV/Pa  
Impedance: 200Ω balanced  
Frequency response: 150Hz-18kHz (-3dB)  
Phantom power supply: 12-52Vdc  
Gooseneck length: 500mm  
Connector: XLR  
Dimensions: H500mm



## PA BMT

---

Microphone base for gooseneck MG400/500,  
connectors XLR-3P. BISTABLE ON/OFF KEY



## PA BMS4

---

Metal base, table mounting by screws, XLR connector







# RACK AND ACCESSORIES

# RACK AND ACCESSORIES



## STUDIORKXL08

19" Standard 8 Unit professional Rack container, matt black painted steel, 4 castors  
Dimensions (WxHxD): 560x467x580mm  
Weight: 17,9 Kg



## PXCOVER08N

Plexiglass door for 8-unit STUDIORKXL



## STUDIORKXL12

19" Standard 12 Unit professional Rack container, matt black painted steel, 4 castors  
Dimensions (WxHxD): 560x646x580mm  
Peso: 21,7 Kg



## PXCOVER12N

Plexiglass door for 12-unit STUDIORKXL



## STUDIORKXL36

19" Standard 36 Unit professional Rack container, matt black painted steel, 4 castors  
Dimensions (WxHxD): 560x1718x580mm Peso: 39 Kg



## PXCOVER36N

Plexiglass door for 36-unit STUDIORKXL



## PA STF1

Bracket for heavy apparatus racks using purposes (AUP120/240/480/AUP4125/4250s etc.). Suitable for STUDIORKXL series rack



## FSR2260

19" Standard 22 Unit professional Rack container, matt black painted steel, with openable door, sides and back, 4 castors. Top with fan unit with thermostat.  
Dimensions (WxHxD): 600x1093x600mm



## FSR2760

19" Standard 27 Unit professional Rack container, matt black painted steel, with openable door, sides and back, 4 castors. Top with fan unit with thermostat.  
Dimensions (WxHxD): 600x1313x600mm



## FSR3260

19" Standard 32 Unit professional Rack container, matt black painted steel, with openable door, sides and back, 4 castors. Top with fan unit with thermostat.  
Dimensions (WxHxD): 600x1533x600mm



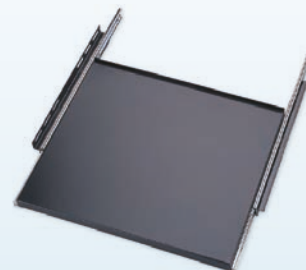
## FSR3760

19" Standard 37 Unit professional Rack container, matt black painted steel, with openable door, sides and back, 4 castors. Top with fan unit with thermostat.  
Dimensions (WxHxD): 600x1753x600mm



## FSR4260

19" Standard 42 Unit professional Rack container, matt black painted steel, with openable door, sides and back, 4 castors. Top with fan unit with thermostat.  
Dimensions (WxHxD): 600x2000x600mm



## FSRSHELF02

19' rack metal sliding shelf to be used on the new FSR rack cabinets only Matt black finish

# RACK AND ACCESSORIES



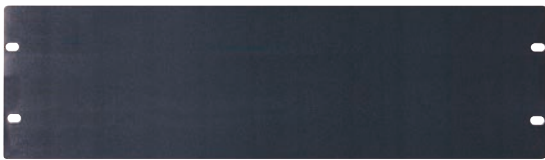
## PA ACC

50A Circuit breaker main switch 19" Rack panel with 6 VDE sockets.  
1 Modular unit height.



## SDC308R

1U horizontal feeding bar made of aluminium profile and flame retardant thermoplastic parts. Features n.8 x 16A 230V 2P +G. Schuko outlet with red lighting switch; 2.5 m length 3 x 1.5 mm<sup>2</sup> power cable and 16A 2P + G Schuko plug (230V, CE 73/23). Max capacity: 3500W. Equipped with universal metal fins, for mounting on 19" rack cabinets.



## RK3L

3-unit 19" rack blank panel



## RK4L

4-unit 19" rack blank panel



## RK1L

1-unit 19" rack blank panel



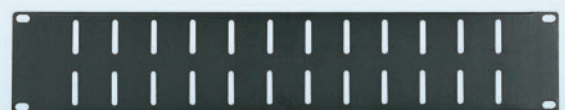
## RK2L

2-unit 19" rack blank panel



## RK1NV

19" 1 rack unit ventilation panel



## RK2NV

19" 2 rack unit ventilation panel



## RK4N

19" 1U Rack Panel  
4 Plug mounting holes for XLR/SPEAKON panel



## RK6N

19" 1U Rack Panel  
6 Plug mounting holes for XLR/RCA/SPEAKON panel



## RK8N

19" 1U Rack Panel  
8 Plug mounting holes for XLR/RCA/SPEAKON panel



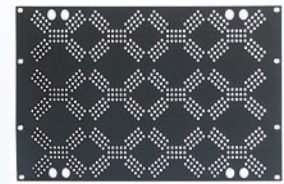
## RK12N

19" 1U Rack Panel  
12 Plug mounting holes for XLR/RCA/SPEAKON panel



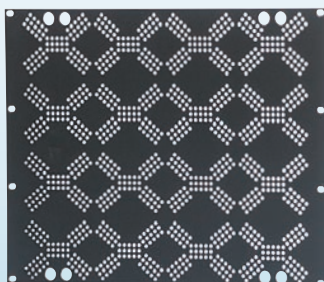
## RK2VP

2-unit back protection Rack panel



## RK6VP

6-unit back protection Rack panel



## RK8VP

8-unit back protection Rack panel

# RACK AND ACCESSORIES



## ADRK2AZ

---

19" 2U rack assembly shelf/adaptor



## ADRK3AZ

---

19" 3U rack assembly shelf/adaptor



## ADRK3CR

---

Lockable 19" 3U rack metal drawer



## ADRK4CR

---

Lockable 19" 4U rack metal drawer



## VOLUME CONTROLS

# VOLUME CONTROLS



## PA TRV12A

Recessed volume attenuator for 100V lines. 12W transformer on European square box. With 24Vdc bypass relay.



## PA TRV50A

Recessed volume attenuator for 100V lines. 50W transformer on European square box. With 24Vdc bypass relay.



## PA TRV6B

Recessed volume attenuator for 100V lines. 6W transformer on 503 box. With 24Vdc bypass relay.



## PA TRV30B

Recessed volume attenuator for 100V lines. 30W transformer on 503 box. With 24Vdc bypass relay.



## PA TRV60B

Recessed volume attenuator for 100V lines. 60W transformer on 503 box. With 24Vdc bypass relay.



## PA TRV120B

Recessed volume attenuator for 100V lines. 120W transformer on 503 box. With 24Vdc bypass relay.



## PA TR50ST

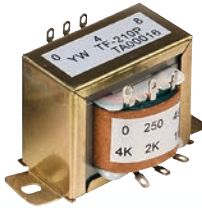
Stereo volume attenuator for 4/8/16 $\Omega$  speakers, 12 positions, 2x50W maximum power handling, dedicated box for flush mounting.





## LINE TRANSFORMERS

# LINE TRANSFORMERS



## PA TR40

---

Audio transformer: 100V-24/12/6/3/1.5W  
Primary impedance: 416-816-1660-3300-6600Ω  
Secondary impedance: 8-4Ω



## PA TR100

---

Audio transformer: 100V-40/20/10/5/2.5W  
Primary impedance: 250-490-1000-2000-4000Ω  
Secondary impedance: 8-4Ω



## PA MATCHBOX

---

Universal audio adapter and decoupler with isolation transformer.  
LINE/LINE - 100V/LINE



## ALPHABETICAL INDEX

# ALPHABETICAL INDEX

CODE	PAGE
<b>ADRK2AZ</b>	62
<b>ADRK3AZ</b>	62
<b>ADRK3CR</b>	62
<b>ADRK4CR</b>	62
<b>AE300</b>	6
<b>AE604</b>	6
<b>DS112P</b>	52
<b>DS112PLF</b>	52
<b>FSR2260</b>	59
<b>FSR2760</b>	59
<b>FSR3260</b>	59
<b>FSR3760</b>	59
<b>FSR4260</b>	59
<b>FSRSHELF02</b>	59
<b>INCOM2</b>	20
<b>PA 48VDCER1</b>	9
<b>PA A31TB</b>	12
<b>PA A31TW</b>	12
<b>PA A51TB</b>	12
<b>PA A51TW</b>	12
<b>PA AC60T</b>	15
<b>PA AC61T</b>	15
<b>PA ACC</b>	60
<b>PA AC012T</b>	16
<b>PA AH50T</b>	14
<b>PA AHS30T</b>	17
<b>PA AIW50FRAME</b>	14
<b>PA AIW50T</b>	14
<b>PA AMIX54Z</b>	36
<b>PA AMIX63</b>	36
<b>PA AMP03VR</b>	32

CODE	PAGE
<b>PA AMP160XL</b>	32
<b>PA AMP35E</b>	32
<b>PA AMP60E</b>	32
<b>PA AP50T</b>	13
<b>PA AP52T</b>	13
<b>PA ATMP160XL</b>	38
<b>PA ATMP240ZXL</b>	33
<b>PA AUP160D</b>	33
<b>PA AUP4250S</b>	33
<b>PA BM01</b>	24
<b>PA BM04</b>	24
<b>PA BM101</b>	54
<b>PA BM102</b>	54
<b>PA BM8X8</b>	23
<b>PA BMCD</b>	26
<b>PA BMDD</b>	26
<b>PA BMG2</b>	54
<b>PA BMS4</b>	55
<b>PA BMT</b>	55
<b>PA C0120S15</b>	44
<b>PA C030S5</b>	44
<b>PA C04006</b>	45
<b>PA C04012</b>	45
<b>PA C060S10</b>	44
<b>PA CONFD</b>	26
<b>PA COVERCS</b>	42
<b>PA CS-6HT60BS</b>	17
<b>PA CS30HSL</b>	43
<b>PA CS602WIFI</b>	41
<b>PA CS81HF</b>	43
<b>PA CSB10</b>	43

CODE	PAGE
<b>PA CSE06T</b>	42
<b>PA CVMF13</b>	27
<b>PA CVMF3</b>	27
<b>PA CVMF6</b>	27
<b>PA CVMM3</b>	27
<b>PA DBE01</b>	7
<b>PA DBE06</b>	7
<b>PA DBE108</b>	7
<b>PA DBE108E</b>	7
<b>PA DBEVF</b>	7
<b>PA DM250/550/750</b>	9
<b>PA DWSKIT</b>	26
<b>PA EV MCL1Z</b>	8
<b>PA EV MCL2Z</b>	8
<b>PA EV PROM5Z</b>	8
<b>PA EV PROS8Z</b>	8
<b>PA EXBM8X8</b>	23
<b>PA EXCONFD</b>	27
<b>PA FGS20</b>	47
<b>PA FSHIFTER</b>	36
<b>PA GS62</b>	47
<b>PA H16R</b>	46
<b>PA HD60T</b>	46
<b>PA HS15AL</b>	46
<b>PA HS30</b>	47
<b>PA HS30AL</b>	46
<b>PA HSPL30</b>	40
<b>PA LOC02</b>	22
<b>PA MATCHBOX</b>	66
<b>PA MATRIX88</b>	22
<b>PA MDAC8</b>	9

CODE	PAGE
<b>PA MDACTV</b>	9
<b>PA MEG30</b>	30
<b>PA MG400</b>	55
<b>PA MG500</b>	55
<b>PA MIC62W</b>	54
<b>PA PR10PL</b>	40
<b>PA PR10PLB</b>	40
<b>PA PR30PL</b>	40
<b>PA R88</b>	22
<b>PA R88L</b>	22
<b>PA RBOX1</b>	23
<b>PA RBOX2</b>	23
<b>PA RM4</b>	33
<b>PA SC1</b>	44
<b>PA SC2</b>	44
<b>PA SNBK</b>	48
<b>PA SNWH</b>	49
<b>PA SOURCEPRO</b>	38
<b>PA STF1</b>	58
<b>PA STONE</b>	47
<b>PA STRWIFI</b>	38
<b>PA TR100</b>	66
<b>PA TR40</b>	66
<b>PA TR50ST</b>	64
<b>PA TRV120B</b>	64
<b>PA TRV12A</b>	64
<b>PA TRV30B</b>	64
<b>PA TRV50A</b>	64
<b>PA TRV60B</b>	64
<b>PA TRV6B</b>	64
<b>PA WS04</b>	41

CODE	PAGE
<b>PA WS50EN</b>	16
<b>PA ZONE8</b>	24
<b>PXCOVER08N</b>	58
<b>PXCOVER12N</b>	58
<b>PXCOVER36N</b>	58
<b>RK12N</b>	61
<b>RK1L</b>	60
<b>RK1NV</b>	60
<b>RK2L</b>	60
<b>RK2NV</b>	60
<b>RK2VP</b>	61
<b>RK3L</b>	60
<b>RK4L</b>	60
<b>RK4N</b>	61
<b>RK6N</b>	61
<b>RK6VP</b>	61
<b>RK8N</b>	61
<b>RK8VP</b>	61
<b>SDC308R</b>	60
<b>STUDIORKXL08</b>	58
<b>STUDIORKXL12</b>	58
<b>STUDIORKXL36</b>	58
<b>XE35TB</b>	48
<b>XE35TW</b>	49
<b>XE51CT</b>	42
<b>XE51CTX</b>	41
<b>XE55TB</b>	48
<b>XE55TW</b>	49
<b>XE65CT</b>	42
<b>XE65TB</b>	48
<b>XE65TW</b>	49





**PROEL** 



**UK**

Proel International Ltd.  
London

**KOREA**

Proel Korea Co. Ltd.  
Gyeonggi-Do

**USA**

Proel North America Inc.  
Los Angeles

**TUNISIE**

Proel Tunisia Sarl  
Tunisi

**PROEL SPA**

(Worldwide Headquarters)  
Via alla Ruenia, 37/43  
64027 Sant'Omero (TE) - ITALY  
Tel. +39 0861 81241  
Fax +39 0861 887862  
P.I. 00778590679  
N.Reg.AEE IT 0802000002762

[info@proel.com](mailto:info@proel.com)  
[www.commercialaudio.proel.com](http://www.commercialaudio.proel.com)

